

[KD Validated] CHCHD4 Rabbit mAb

Catalog No.: A27252 **Recombinant**

Basic Information

Observed MW

22kDa

Calculated MW

16kDa

Category

Primary antibody

Applications

WB,IF/ICC,IF-P,IHC-P,ELISA

Cross-Reactivity

Human, Mouse, Rat

CloneNo number

ARC72750

Background

CHCHD4, a component of human mitochondria, belongs to a protein family whose members share 6 highly conserved cysteine residues constituting a -CXC-CX(9)C-CX(9)C- motif in the C terminus (Hofmann et al., 2005 [PubMed 16185709]).

Recommended Dilutions

| | |
|---------------|---|
| WB | 1:13000 - 1:78000 |
| IF/ICC | 1:50 - 1:200 |
| IF-P | 1:50 - 1:200 |
| IHC-P | 1:600 - 1:3000 |
| ELISA | Recommended starting concentration is 1 µg/mL. Please optimize the concentration based on your specific assay requirements. |

Contact

| | |
|--|---------------------------|
|  | 400-999-6126 |
|  | cn.market@abclonal.com.cn |
|  | www.abclonal.com.cn |

Immunogen Information

Gene ID

131474

Swiss Prot

Q8N4Q1

Immunogen

Recombinant protein (or fragment). This information is considered to be commercially sensitive.

Synonyms

MIA40; TIMM40

Product Information

Source

Rabbit

Isotype

IgG

Purification

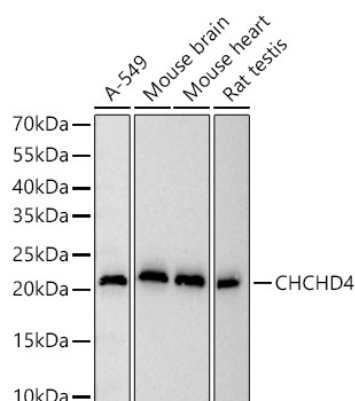
Affinity purification

Storage

Store at -20°C. Avoid freeze / thaw cycles.

Buffer: PBS with 0.09% Sodium azide, 0.05% BSA, 50% glycerol, pH7.3.

Validation Data



Western blot analysis of various lysates using [KD Validated] CHCHD4 Rabbit mAb (A27252) at 1:13000 dilution incubated at room temperature for 1.5 hours.

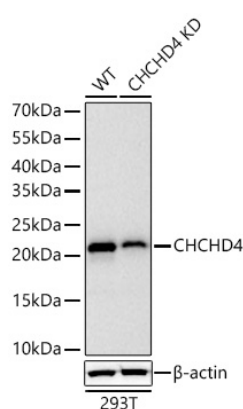
Secondary antibody: HRP-conjugated Goat anti-Rabbit IgG (H+L) (AS014) at 1:10000 dilution.

Lysates/proteins: 25 µg per lane.

Blocking buffer: 3% nonfat dry milk in TBST.

Detection: ECL Basic Kit (RM00020).

Exposure time: 10s.



Western blot analysis of lysates from wild type (WT) and CHCHD4 knockdown (KD) 293T cells using [KD Validated] CHCHD4 Rabbit mAb (A27252) at 1:13000 dilution incubated at room temperature for 1.5 hours.

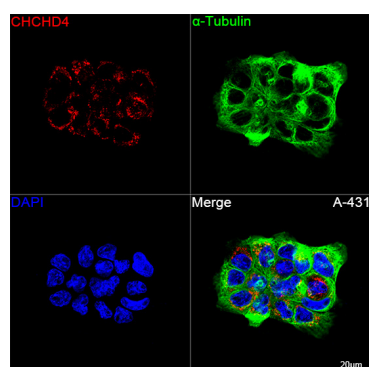
Secondary antibody: HRP-conjugated Goat anti-Rabbit IgG (H+L) (AS014) at 1:10000 dilution.

Lysates/proteins: 25 µg per lane.

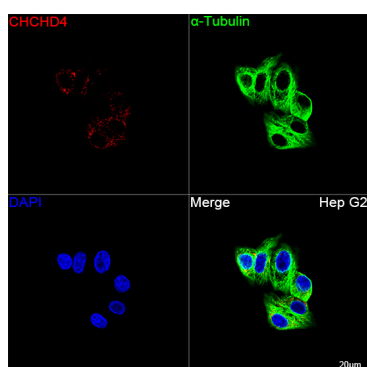
Blocking buffer: 3% nonfat dry milk in TBST.

Detection: ECL Basic Kit (RM00020).

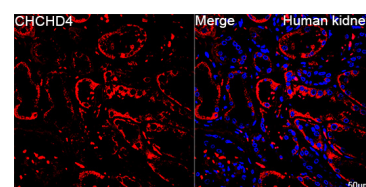
Exposure time: 10s.



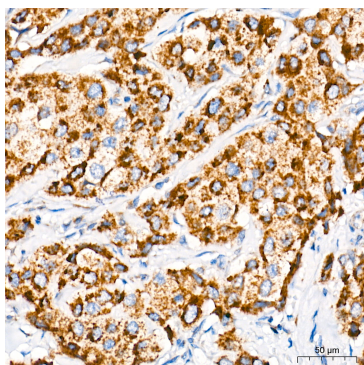
Confocal imaging of A-431 cells using [KD Validated] CHCHD4 Rabbit mAb (A27252, dilution 1:200) followed by a further incubation with Cy3 Goat Anti-Rabbit IgG (H+L) (AS007, dilution 1:500) (Red). The cells were counterstained with α-Tubulin Mouse mAb (AC012, dilution 1:400) followed by incubation with ABflo® 488-conjugated Goat Anti-Mouse IgG (H+L) Ab (AS076, dilution 1:500) (Green). DAPI was used for nuclear staining (Blue). Objective: 100x.



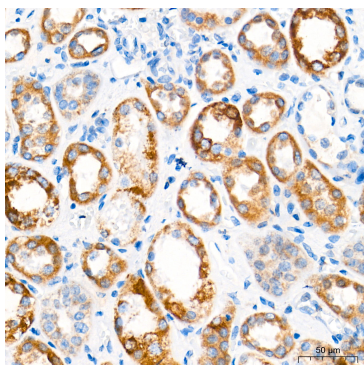
Confocal imaging of Hep G2 cells using [KD Validated] CHCHD4 Rabbit mAb (A27252, dilution 1:200) followed by a further incubation with Cy3 Goat Anti-Rabbit IgG (H+L) (AS007, dilution 1:500) (Red). The cells were counterstained with α-Tubulin Mouse mAb (AC012, dilution 1:400) followed by incubation with ABflo® 488-conjugated Goat Anti-Mouse IgG (H+L) Ab (AS076, dilution 1:500) (Green). DAPI was used for nuclear staining (Blue). Objective: 100x.



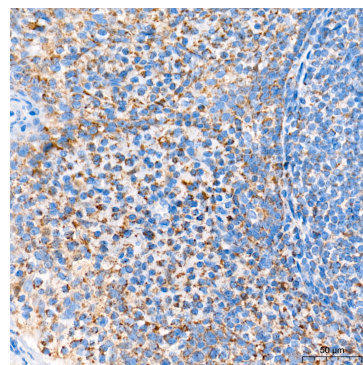
Confocal imaging of paraffin-embedded Human kidney tissue using [KD Validated] CHCHD4 Rabbit mAb (A27252, dilution 1:200) followed by a further incubation with Cy3 Goat Anti-Rabbit IgG (H+L) (AS007, dilution 1:500) (Red). DAPI was used for nuclear staining (Blue). High pressure antigen retrieval performed with 0.01M Citrate Buffer (pH 6.0) prior to IF staining. Objective: 40x.



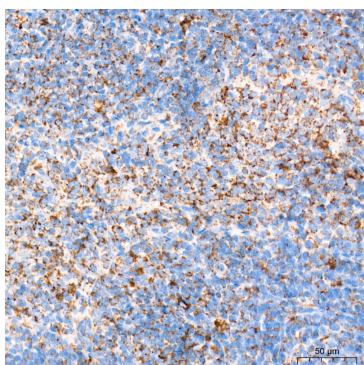
Immunohistochemistry analysis of paraffin-embedded Human breast cancer tissue using [KD Validated] CHCHD4 Rabbit mAb (A27252) at a dilution of 1:600 (40x lens). High pressure antigen retrieval performed with 0.01M Tris-EDTA Buffer (pH 9.0) prior to IHC staining.



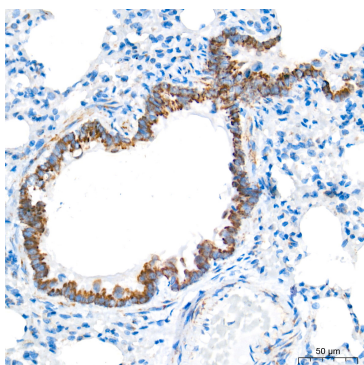
Immunohistochemistry analysis of paraffin-embedded Human kidney tissue using [KD Validated] CHCHD4 Rabbit mAb (A27252) at a dilution of 1:600 (40x lens). High pressure antigen retrieval performed with 0.01M Tris-EDTA Buffer (pH 9.0) prior to IHC staining.



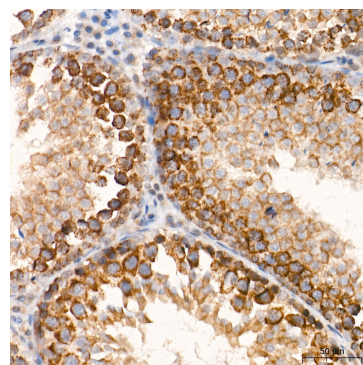
Immunohistochemistry analysis of paraffin-embedded Human tonsil tissue using [KD Validated] CHCHD4 Rabbit mAb (A27252) at a dilution of 1:600 (40x lens). High pressure antigen retrieval performed with 0.01M Tris-EDTA Buffer (pH 9.0) prior to IHC staining.



Immunohistochemistry analysis of paraffin-embedded Rat spleen tissue using [KD Validated] CHCHD4 Rabbit mAb (A27252) at a dilution of 1:600 (40x lens). High pressure antigen retrieval performed with 0.01M Tris-EDTA Buffer (pH 9.0) prior to IHC staining.



Immunohistochemistry analysis of paraffin-embedded Rat lung tissue using [KD Validated] CHCHD4 Rabbit mAb (A27252) at a dilution of 1:600 (40x lens). High pressure antigen retrieval performed with 0.01M Tris-EDTA Buffer (pH 9.0) prior to IHC staining.



Immunohistochemistry analysis of paraffin-embedded Rat testis tissue using [KD Validated] CHCHD4 Rabbit mAb (A27252) at a dilution of 1:600 (40x lens). High pressure antigen retrieval performed with 0.01M Tris-EDTA Buffer (pH 9.0) prior to IHC staining.