

Cas9 Rabbit mAb

Catalog No.: A27269 **Recombinant**

Basic Information

Observed MW

160kDa

Calculated MW

158kDa

Category

Primary antibody

Applications

WB,IF/ICC,ELISA

Cross-Reactivity

Human, Other (Wide Range Predicted)

CloneNo number

ARC72423

Background

Staphylococcus aureus Cas9 (SaCas9) is an RNA-guided endonuclease that targets complementary DNA adjacent to a protospacer adjacent motif (PAM) for cleavage. Its small size facilitates in vivo delivery for genome editing in various organisms.

Recommended Dilutions

WB 1:1000 - 1:2000

IF/ICC 1:200 - 1:800

ELISA Recommended starting concentration is 1 µg/mL. Please optimize the concentration based on your specific assay requirements.

Immunogen Information

Gene ID

901176

Swiss Prot

Q99ZW2

Immunogen

Recombinant fusion protein containing a sequence corresponding to amino acids 450-730 of streptococcus pyogenes m1 gas CAS9 (NP_269215.1).

Synonyms

CAS9

Contact

☎ | 400-999-6126

✉ | cn.market@abclonal.com.cn

🌐 | www.abclonal.com.cn

Product Information

Source

Rabbit

Isotype

IgG

Purification

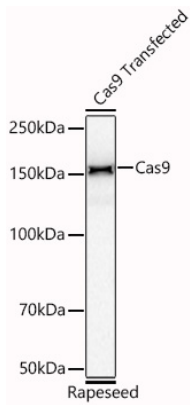
Affinity purification

Storage

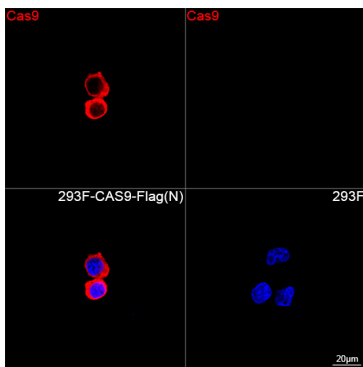
Store at -20°C. Avoid freeze / thaw cycles.

Buffer: PBS with 0.09% Sodium azide,0.05% BSA,50% glycerol,pH7.3.

Validation Data



Western blot analysis of lysates from Rapeseed transfected with Cas9 using Cas9 Rabbit mAb (A27269) at 1:1000 dilution incubated overnight at 4°C.
Secondary antibody: HRP-conjugated Goat anti-Rabbit IgG (H+L) (AS014) at 1:10000 dilution.
Lysates/proteins: 10ng per lane.
Blocking buffer: 3% nonfat dry milk in TBST.
Detection: ECL Basic Kit (RM00020).
Exposure time: 90s.



Confocal imaging of 293T cells transfected with CAS9 cells using Cas9 Rabbit mAb (A27269, dilution 1:200) followed by a further incubation with Cy3 Goat Anti-Rabbit IgG (H+L) (AS007, dilution 1:500) (Red). DAPI was used for nuclear staining (Blue). Objective: 100x.