

# PE Rabbit anti-Human CD336/NKp44 mAb

Catalog No.: A27276

## Basic Information

### Observed MW

### Calculated MW

31kDa

### Category

Primary antibody

### Applications

FC

### Cross-Reactivity

Human

### CloneNo number

ARC69299

### Conjugate

PE. Ex:565nm. Em:574nm.

## Background

Predicted to enable signaling receptor activity. Predicted to be involved in cellular defense response and signal transduction. Predicted to be located in plasma membrane. Predicted to be integral component of plasma membrane. Predicted to be active in cell surface.

## Recommended Dilutions

FC 5  $\mu$ l per  $10^6$  cells in  
100  $\mu$ l volume

## Immunogen Information

### Gene ID

9436

### Swiss Prot

O95944

### Immunogen

Recombinant protein (or fragment). This information is considered to be commercially sensitive.

### Synonyms

LY95; CD336; NKp44; NK-p44; dj149M18.1

## Contact

 | 400-999-6126

 | [cn.market@abclonal.com.cn](mailto:cn.market@abclonal.com.cn)

 | [www.abclonal.com.cn](http://www.abclonal.com.cn)

## Product Information

### Source

Rabbit

### Isotype

IgG

### Purification

Affinity purification

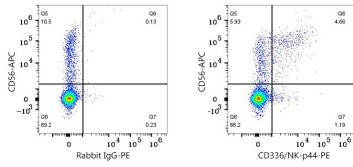
### Storage

Store at 2-8°C. Avoid freeze.

Buffer: PBS with 0.09% Sodium azide, 0.2% BSA, pH7.3.

## Validation Data

---



Flow cytometry:  $1 \times 10^6$  Human PBMC (treated with rhIL-2 for 7 days) were surface-stained with APC Mouse anti-Human CD56 mAb (A26869, 5  $\mu$ l/Test) and PE Rabbit IgG isotype control (A24172, 5  $\mu$ l/Test, left) or PE Rabbit anti-Human CD336/NK-p44 mAb (A27276, 5  $\mu$ l/Test, right). Cells in the lymphocyte gate were used for analysis.