

HSD17B2 Rabbit mAb

Catalog No.: A27293 **Recombinant**

Basic Information

Observed MW

43kDa

Calculated MW

43kDa

Category

Primary antibody

Applications

WB, IHC-P, ELISA

Cross-Reactivity

Human, Mouse, Rat

CloneNo number

ARC73082

Background

Enables estradiol 17-beta-dehydrogenase activity and testosterone dehydrogenase (NAD+) activity. Involved in response to retinoic acid. Predicted to be located in endoplasmic reticulum membrane.

Recommended Dilutions

WB 1:13000 - 1:78000

IHC-P 1:700 - 1:7000

ELISA Recommended starting concentration is 1 µg/mL. Please optimize the concentration based on your specific assay requirements.

Immunogen Information

Gene ID

3294

Swiss Prot

P37059

Immunogen

Synthetic peptide. This information is considered to be commercially sensitive.

Synonyms

HSD17; SDR9C2; EDH17B2

Contact

☎ | 400-999-6126

✉ | cn.market@abclonal.com.cn

🌐 | www.abclonal.com.cn

Product Information

Source

Rabbit

Isotype

IgG

Purification

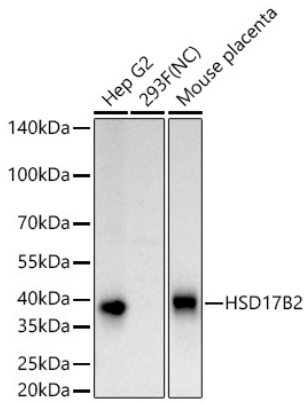
Affinity purification

Storage

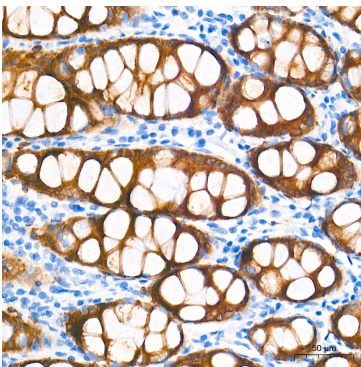
Store at -20°C. Avoid freeze / thaw cycles.

Buffer: PBS with 0.09% Sodium azide, 0.05% BSA, 50% glycerol, pH7.3.

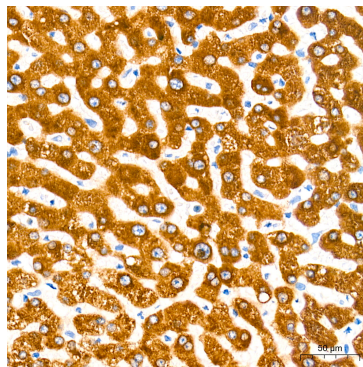
Validation Data



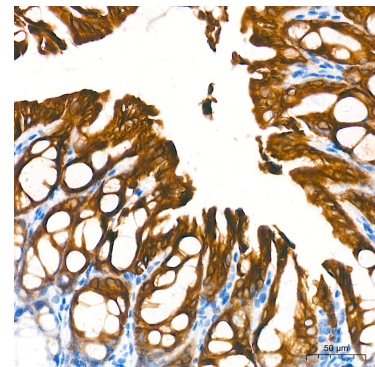
Western blot analysis of various lysates using HSD17B2 Rabbit mAb (A27293) at 1:13000 dilution incubated overnight at 4°C.
Secondary antibody: HRP-conjugated Goat anti-Rabbit IgG (H+L) (AS014) at 1:10000 dilution.
Lysates/proteins: 25 µg per lane.
Blocking buffer: 3% nonfat dry milk in TBST.
Detection: ECL Basic Kit (RM00020).
Negative control (NC): 293F
Exposure time: 30s.



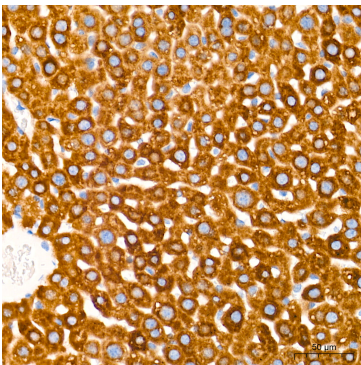
Immunohistochemistry analysis of paraffin-embedded Human colon tissue using HSD17B2 Rabbit mAb (A27293) at a dilution of 1:1000 (40x lens). High pressure antigen retrieval performed with 0.01M Tris-EDTA Buffer (pH 9.0) prior to IHC staining.



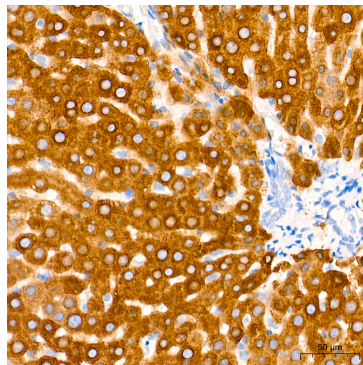
Immunohistochemistry analysis of paraffin-embedded Human liver tissue using HSD17B2 Rabbit mAb (A27293) at a dilution of 1:1000 (40x lens). High pressure antigen retrieval performed with 0.01M Tris-EDTA Buffer (pH 9.0) prior to IHC staining.



Immunohistochemistry analysis of paraffin-embedded Mouse colon tissue using HSD17B2 Rabbit mAb (A27293) at a dilution of 1:1000 (40x lens). High pressure antigen retrieval performed with 0.01M Tris-EDTA Buffer (pH 9.0) prior to IHC staining.



Immunohistochemistry analysis of paraffin-embedded Mouse liver tissue using HSD17B2 Rabbit mAb (A27293) at a dilution of 1:1000 (40x lens). High pressure antigen retrieval performed with 0.01M Tris-EDTA Buffer (pH 9.0) prior to IHC staining.



Immunohistochemistry analysis of paraffin-embedded Rat liver tissue using HSD17B2 Rabbit mAb (A27293) at a dilution of 1:1000 (40x lens). High pressure antigen retrieval performed with 0.01M Tris-EDTA Buffer (pH 9.0) prior to IHC staining.