

[KO Validated] HIF1AN/FIH-1 Rabbit mAb

Catalog No.: A27299 **KO** **Validated** **Recombinant**

Basic Information

Observed MW

40kDa

Calculated MW

41kDa

Category

Primary antibody

Applications

WB,IHC-P,IF/ICC,ELISA

Cross-Reactivity

Human, Mouse, Rat

CloneNo number

ARC73051

Background

Enables several functions, including 2-oxoglutarate-dependent dioxygenase activity; NF-kappaB binding activity; and transition metal ion binding activity. Involved in several processes, including negative regulation of Notch signaling pathway; negative regulation of transcription from RNA polymerase II promoter in response to hypoxia; and protein hydroxylation. Located in cytosol; nucleoplasm; and perinuclear region of cytoplasm. Colocalizes with nucleus.

Recommended Dilutions

WB	1:8000 - 1:32000
IHC-P	1:100 - 1:400
IF/ICC	1:100 - 1:400
ELISA	Recommended starting concentration is 1 µg/mL. Please optimize the concentration based on your specific assay requirements.

Immunogen Information

Gene ID

55662

Swiss Prot

Q9NWT6

Immunogen

Recombinant protein (or fragment). This information is considered to be commercially sensitive.

Synonyms

FIH1

Contact

☎	400-999-6126
✉	cn.market@abclonal.com.cn
🌐	www.abclonal.com.cn

Product Information

Source

Rabbit

Isotype

IgG

Purification

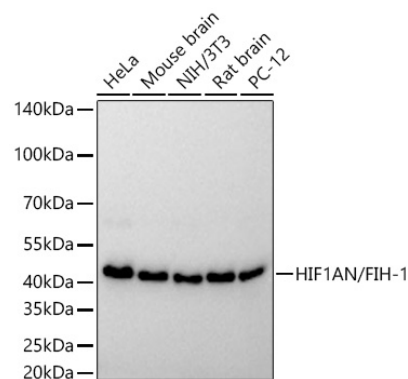
Affinity purification

Storage

Store at -20°C. Avoid freeze / thaw cycles.

Buffer: PBS with 0.09% Sodium azide, 0.05% BSA, 50% glycerol, pH7.3.

Validation Data



Western blot analysis of various lysates using [KO Validated] HIF1AN/FIH-1 Rabbit mAb (A27299) at 1:16000 dilution incubated overnight at 4°C.

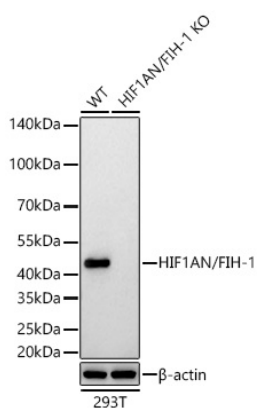
Secondary antibody: HRP-conjugated Goat anti-Rabbit IgG (H+L) (AS014) at 1:10000 dilution.

Lysates/proteins: 25 µg per lane.

Blocking buffer: 3% nonfat dry milk in TBST.

Detection: ECL Basic Kit (RM00020).

Exposure time: 45s.



Western blot analysis of lysates from wild type (WT) and HIF1AN/FIH-1 knockout (KO) 293T cells using [KO Validated] HIF1AN/FIH-1 Rabbit mAb (A27299) at 1:16000 dilution incubated overnight at 4°C.

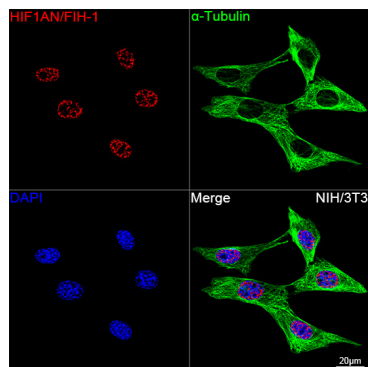
Secondary antibody: HRP-conjugated Goat anti-Rabbit IgG (H+L) (AS014) at 1:10000 dilution.

Lysates/proteins: 25 µg per lane.

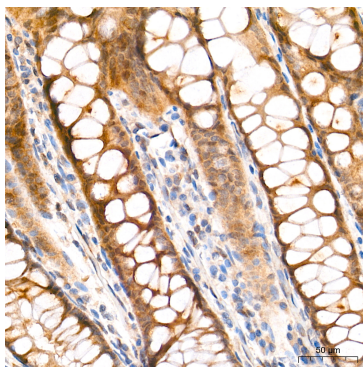
Blocking buffer: 3% nonfat dry milk in TBST.

Detection: ECL Basic Kit (RM00020).

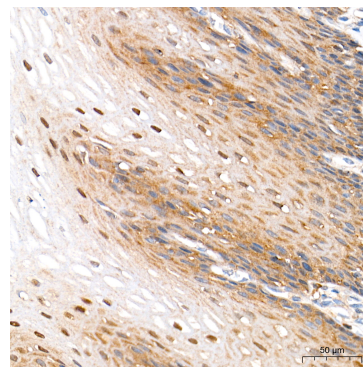
Exposure time: 45s.



Confocal imaging of NIH/3T3 cells using [KO Validated] HIF1AN/FIH-1 Rabbit mAb (A27299, dilution 1:200) followed by a further incubation with Cy3 Goat Anti-Rabbit IgG (H+L) (AS007, dilution 1:500) (Red). The cells were counterstained with α-Tubulin Mouse mAb (AC012, dilution 1:400) followed by incubation with ABflo® 488-conjugated Goat Anti-Mouse IgG (H+L) Ab (AS076, dilution 1:500) (Green). DAPI was used for nuclear staining (Blue). Objective: 100x.

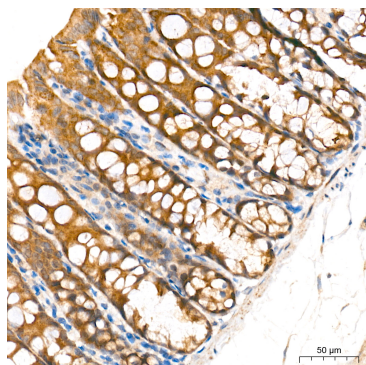


Immunohistochemistry analysis of paraffin-embedded Human colon tissue using [KO Validated] HIF1AN/FIH-1 Rabbit mAb (A27299) at a dilution of 1:200 (40x lens). High pressure antigen retrieval performed with 0.01M Tris-EDTA Buffer (pH 9.0) prior to IHC staining.

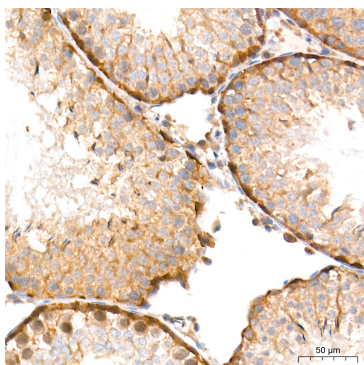


Immunohistochemistry analysis of paraffin-embedded Human esophagus tissue using [KO Validated] HIF1AN/FIH-1 Rabbit mAb (A27299) at a dilution of 1:200 (40x lens). High pressure antigen retrieval performed with 0.01M Tris-EDTA Buffer (pH 9.0) prior to IHC staining.

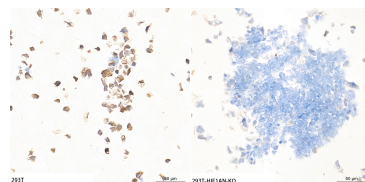
Validation Data



Immunohistochemistry analysis of paraffin-embedded Mouse colon tissue using [KO Validated] HIF1AN/Flh-1 Rabbit mAb (A27299) at a dilution of 1:200 (40x lens). High pressure antigen retrieval performed with 0.01M Tris-EDTA Buffer (pH 9.0) prior to IHC staining.



Immunohistochemistry analysis of paraffin-embedded Rat testis tissue using [KO Validated] HIF1AN/Flh-1 Rabbit mAb (A27299) at a dilution of 1:200 (40x lens). High pressure antigen retrieval performed with 0.01M Tris-EDTA Buffer (pH 9.0) prior to IHC staining.



Immunohistochemistry analysis of paraffin-embedded 293T and 293T-HIF1AN-KO cells using [KO Validated] HIF1AN/Flh-1 Rabbit mAb (A27299) at a dilution of 1:200 (40x lens). High pressure antigen retrieval performed with 0.01M Tris-EDTA Buffer (pH 9.0) prior to IHC staining.