

Rabbit anti-Human IgG (Fc) mAb

Catalog No.: A27304

Basic Information

Observed MW

Calculated MW

44kDa

Category

Primary antibody

Applications

IHC-P,IF/ICC,FC,ELISA

Cross-Reactivity

Human

CloneNo number

ARC53383

Background

Predicted to enable antigen binding activity and immunoglobulin receptor binding activity. Predicted to be involved in several processes, including activation of immune response; defense response to other organism; and phagocytosis. Predicted to act upstream of or within several processes, including immunoglobulin mediated immune response; positive regulation of hypersensitivity; and positive regulation of phagocytosis. Located in extracellular space.

Recommended Dilutions

IHC-P 1:500 - 1:2000

IF/ICC 1:100 - 1:400

FC 1:50 - 1:200

ELISA Recommended starting concentration is 1 µg/mL. Please optimize the concentration based on your specific assay requirements.

Immunogen Information

Gene ID

3500

Swiss Prot

P01857,P01859,P01860,P01861

Immunogen

Recombinant fusion protein containing a sequence corresponding to amino acids 100-330 of human IgG1 (Fc) (P01857).

Synonyms

IGHG1

Contact

☎ | 400-999-6126

✉ | cn.market@abclonal.com.cn

🌐 | www.abclonal.com.cn

Product Information

Source

Rabbit

Isotype

IgG

Purification

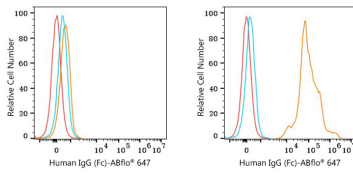
Affinity purification

Storage

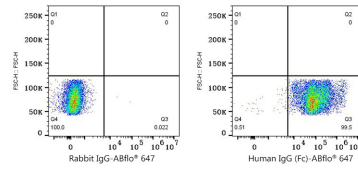
Store at -20°C. Avoid freeze / thaw cycles.

Buffer: PBS with 0.09% Sodium azide,0.05% BSA,50% glycerol,pH7.3.

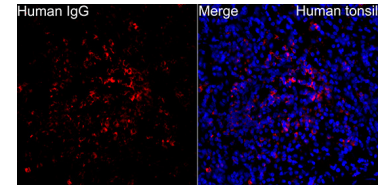
Validation Data



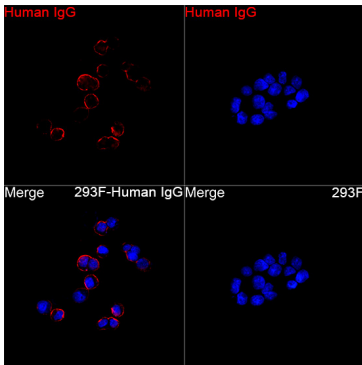
Flow cytometry: 1×10^6 293F cells (negative control, left) and 293F (Transfection, right) cells were intracellularly stained with Rabbit anti-Human IgG (Fc) mAb (A27304, 2 $\mu\text{g}/\text{mL}$, orange line) or Rabbit IgG isotype control (AC042, 2 $\mu\text{g}/\text{mL}$, blue line), followed by Alexa Fluor® 647 conjugated goat anti-rabbit pAb staining. Non-fluorescently stained cells were used as blank control (red line).



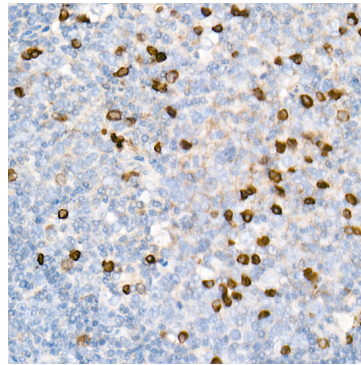
Flow cytometry: 1×10^6 293F (Transfection) cells were surface-stained with Rabbit IgG isotype control (AC042, 2 $\mu\text{g}/\text{mL}$, left) or Rabbit anti-Human IgG (Fc) mAb (A27304, 2 $\mu\text{g}/\text{mL}$, right), followed by Alexa Fluor® 647 conjugated goat anti-rabbit pAb staining.



Immunofluorescence analysis of Human tonsil tissue using Rabbit anti-Human IgG (Fc) mAb (A27304) at a dilution of 1:200 (40x lens). Secondary antibody: Cy3-conjugated Goat anti-Rabbit IgG (H+L) (AS007) at 1:500 dilution. Blue: DAPI for nuclear staining. High pressure antigen retrieval performed with 0.01M Citrate Buffer (pH 6.0) prior to IF staining.



Immunofluorescence analysis of 293F transfected with Human IgG and 293F cells using Rabbit anti-Human IgG (Fc) mAb (A27304) at a dilution of 1:200 (40x lens). Secondary antibody: Cy3-conjugated Goat anti-Rabbit IgG (H+L) (AS007) at 1:500 dilution. Blue: DAPI for nuclear staining.



Immunohistochemistry analysis of paraffin-embedded Human tonsil tissue using Rabbit anti-Human IgG (Fc) mAb (A27304) at a dilution of 1:500 (40x lens). High pressure antigen retrieval performed with 0.01M Citrate Buffer (pH 6.0) prior to IHC staining.