

Biotin Rabbit anti-Mouse CD24 mAb

Catalog No.: A27352

Basic Information

Observed MW

Calculated MW

8kDa

Category

Primary antibody

Applications

FC

Cross-Reactivity

Mouse

CloneNo number

ARC66569

Conjugate

Biotin

Background

CD24, also known as heat stable antigen HSA, is a P-selectin ligand involved in adhesion. It is a GPI-anchored glycoprotein expressed on many types of cells, including hematopoietic cells, neural cells, and epithelial cells. CD24 is widely used to delineate stages of lymphocyte development. It also binds to Siglec-10 in humans or Siglec-G in mice. CD24 is frequently used as a marker to identify and isolate cancer stem cells in various cancer types.

Recommended Dilutions

FC ≤0.5 µg per million cells
in 100 µl volume

Immunogen Information

Gene ID

12484

Swiss Prot

P24807

Immunogen

Recombinant protein (or fragment). This information is considered to be commercially sensitive.

Synonyms

HSA; Cd24; Ly-52; nectadrin

Contact

☎ | 400-999-6126

✉ | cn.market@abclonal.com.cn

🌐 | www.abclonal.com.cn

Product Information

Source

Rabbit

Isotype

IgG

Purification

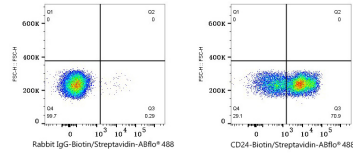
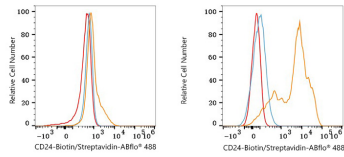
Affinity purification

Storage

Store at 2-8°C. Avoid freeze.

Buffer: PBS with 0.09% Sodium azide, 0.2% BSA, pH7.3.

Validation Data



Flow cytometry: 1×10^6 RAW 264.7 cells (low expression, left) and C57BL/6 mouse splenocytes (right) were surface-stained with Biotin Rabbit anti-Mouse CD24 mAb (A27837, 0.5 µg, orange line) or Biotin Rabbit IgG isotype control (A25626, 5 µl/Test, blue line), followed by ABflo® 488 Streptavidin staining. Non-fluorescently stained cells were used as blank control (red line).

Flow cytometry: 1×10^6 C57BL/6 mouse splenocytes were surface-stained with Biotin Rabbit IgG isotype control (A25626, 5 µl/Test, left) or Biotin Rabbit anti-Mouse CD24 mAb (A27837, 0.5 µg, right), followed by ABflo® 488 Streptavidin staining.