

# ABflo® 700 Rabbit anti-Mouse CD48 mAb

Catalog No.: A27368

## Basic Information

### Observed MW

**Calculated MW**  
27kDa

**Category**  
Primary antibody

**Applications**  
FC

**Cross-Reactivity**  
Mouse

**CloneNo number**  
ARC67324

**Conjugate**  
ABflo® 700. Ex:690nm. Em:713nm.

## Recommended Dilutions

**FC** 5 µl per 10<sup>6</sup> cells in  
100 µl volume

## Background

Predicted to enable antigen binding activity and signaling receptor activity. Acts upstream of or within T cell activation and signal transduction. Located in external side of plasma membrane. Is expressed in left lung; liver; right lung; and thymus primordium. Orthologous to human CD48 (CD48 molecule).

## Immunogen Information

Gene ID	Swiss Prot
12506	P18181

### Immunogen

Recombinant protein (or fragment). This information is considered to be commercially sensitive.

### Synonyms

BCM1; BLAST; Bcm-1; BLAST1; SLAMF2; Sgp-60; BLAST-1; MEM-102

## Contact

 | 400-999-6126

 | [cn.market@abclonal.com.cn](mailto:cn.market@abclonal.com.cn)

 | [www.abclonal.com.cn](http://www.abclonal.com.cn)

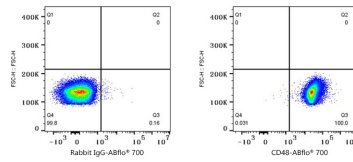
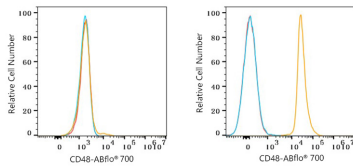
## Product Information

Source	Isotype	Purification
Rabbit	IgG	Affinity purification

### Storage

Store at 2-8°C. Avoid freeze.  
Buffer: PBS with 0.09% Sodium azide, 0.2% BSA, pH7.3.

## Validation Data



Flow cytometry:  $1 \times 10^6$  NIH/3T3 cells (negative control, left) and C57BL/6 mouse splenocytes (right) were surface-stained with ABflo® 700 Rabbit anti-Mouse CD48 mAb (A27368, 5  $\mu$ l/Test, orange line) or ABflo® 700 Rabbit IgG isotype control (A25976, 5  $\mu$ l/Test, blue line). Non-fluorescently stained cells were used as blank control (red line).

Flow cytometry:  $1 \times 10^6$  C57BL/6 mouse splenocytes were surface-stained with ABflo® 700 Rabbit IgG isotype control (A25976, 5  $\mu$ l/Test, left) or ABflo® 700 Rabbit anti-Mouse CD48 mAb (A27368, 5  $\mu$ l/Test, right).