

DGLUCY Rabbit mAb

Catalog No.: A27369 **Recombinant**

Basic Information

Observed MW

Refer to figures

Calculated MW

66kDa

Category

Primary antibody

Applications

WB,IHC-P,ELISA

Cross-Reactivity

Human, Mouse

CloneNo number

ARC73381

Background

Predicted to enable D-glutamate cyclase activity. Predicted to be involved in glutamate metabolic process. Predicted to be located in mitochondrial matrix.

Recommended Dilutions

WB 1:6500 - 1:26000

IHC-P 1:200 - 1:800

ELISA Recommended starting concentration is 1 µg/mL. Please optimize the concentration based on your specific assay requirements.

Immunogen Information

Gene ID

80017

Swiss Prot

Q7Z3D6

Immunogen

Recombinant protein (or fragment). This information is considered to be commercially sensitive.

Synonyms

C14orf159; DGLUCY

Contact

 | 400-999-6126

 | cn.market@abclonal.com.cn

 | www.abclonal.com.cn

Product Information

Source

Rabbit

Isotype

IgG

Purification

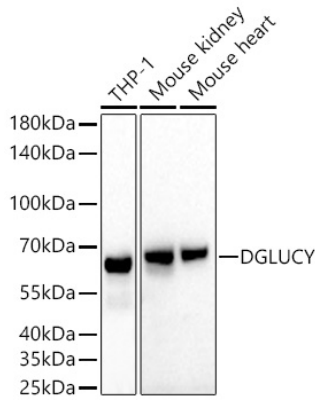
Affinity purification

Storage

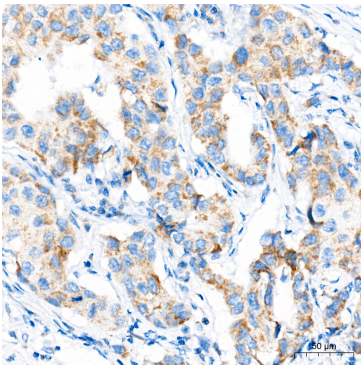
Store at -20°C. Avoid freeze / thaw cycles.

Buffer: PBS with 0.09% Sodium azide, 0.05% BSA, 50% glycerol, pH7.3.

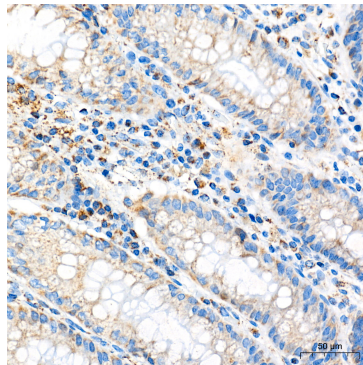
Validation Data



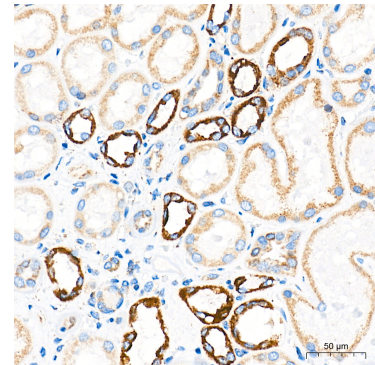
Western blot analysis of various lysates using DGLUCY Rabbit mAb (A27369) at 1:13000 dilution incubated at room temperature for 1.5 hours.
Secondary antibody: HRP-conjugated Goat anti-Rabbit IgG (H+L) (AS014) at 1:10000 dilution.
Lysates/proteins: 25 µg per lane.
Blocking buffer: 3% nonfat dry milk in TBST.
Detection: ECL Basic Kit (RM00020).
Exposure time: 45s.



Immunohistochemistry analysis of paraffin-embedded Human breast cancer tissue using DGLUCY Rabbit mAb (A27369) at a dilution of 1:600 (40x lens). High pressure antigen retrieval performed with 0.01M Tris-EDTA Buffer (pH 9.0) prior to IHC staining.



Immunohistochemistry analysis of paraffin-embedded Human colon tissue using DGLUCY Rabbit mAb (A27369) at a dilution of 1:600 (40x lens). High pressure antigen retrieval performed with 0.01M Tris-EDTA Buffer (pH 9.0) prior to IHC staining.



Immunohistochemistry analysis of paraffin-embedded Human kidney tissue using DGLUCY Rabbit mAb (A27369) at a dilution of 1:600 (40x lens). High pressure antigen retrieval performed with 0.01M Tris-EDTA Buffer (pH 9.0) prior to IHC staining.