

# Biotin Rabbit anti-Mouse CD11b mAb

Catalog No.: A27374

## Basic Information

### Observed MW

**Calculated MW**  
127kDa

**Category**  
Primary antibody

**Applications**  
FC

**Cross-Reactivity**  
Mouse

**CloneNo number**  
ARC63899

**Conjugate**  
Biotin

## Background

Enables complement component C3b binding activity; heparan sulfate proteoglycan binding activity; and heparin binding activity. Contributes to cargo receptor activity. Involved in several processes, including central nervous system development; endocytosis; and positive regulation of neuron death. Acts upstream of or within several processes, including activated T cell proliferation; leukocyte migration; and microglia development. Located in external side of plasma membrane and nucleus. Is integral component of membrane. Part of integrin alphaM-beta2 complex. Is expressed in several structures, including central nervous system; heart; lymphatic vessel; thymus; and yolk sac. Human ortholog(s) of this gene implicated in lupus nephritis. Orthologous to human ITGAM (integrin subunit alpha M).

## Recommended Dilutions

**FC** 5 µl per 10<sup>6</sup> cells in  
100 µl volume

## Immunogen Information

<b>Gene ID</b> 16409	<b>Swiss Prot</b> P05555
-------------------------	-----------------------------

### Immunogen

Recombinant protein (or fragment). This information is considered to be commercially sensitive.

### Synonyms

CR3; CR3A; MAC1; Cd11b; Ly-40; Mac-1; Mac-1a; CD11b/CD18; F730045J24Rik

## Contact

☎		400-999-6126
✉		cn.market@abclonal.com.cn
🌐		www.abclonal.com.cn

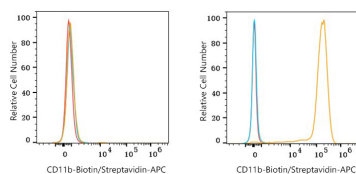
## Product Information

<b>Source</b> Rabbit	<b>Isotype</b> IgG	<b>Purification</b> Affinity purification
-------------------------	-----------------------	--

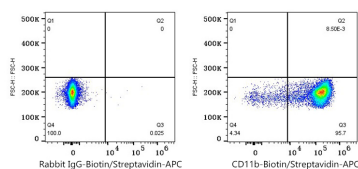
### Storage

Store at 2-8°C. Avoid freeze.  
Buffer: PBS with 0.09% Sodium azide, 0.2% BSA, pH7.3.

## Validation Data



Flow cytometry:  $1 \times 10^6$  C2C12 cells (negative control, left) and C57BL/6 mouse bone marrow cells (right) were surface-stained with Biotin Rabbit anti-Mouse CD11b mAb (A27374, 5  $\mu$ l/Test, orange line) or Biotin Rabbit IgG isotype control (A25626, 5  $\mu$ l/Test, blue line), followed by APC Streptavidin staining. Non-fluorescently stained cells were used as blank control (red line).



Flow cytometry:  $1 \times 10^6$  C57BL/6 mouse bone marrow cells were surface-stained with Biotin Rabbit IgG isotype control (A25626, 5  $\mu$ l/Test, left) or Biotin Rabbit anti-Mouse CD11b mAb (A27374, 5  $\mu$ l/Test, right), followed by APC Streptavidin staining.