

PE Rabbit anti-Human CD7 mAb

Catalog No.: A27376

Basic Information

Observed MW

Refer to figures

Calculated MW

25kDa

Category

Primary antibody

Applications

FC

Cross-Reactivity

Human

CloneNo number

ARC54668

Conjugate

PE. Ex:565nm. Em:574nm.

Recommended Dilutions

FC 5 μ l per 10^6 cells in
100 μ l volume

Background

This gene encodes a transmembrane protein which is a member of the immunoglobulin superfamily. This protein is found on thymocytes and mature T cells. It plays an essential role in T-cell interactions and also in T-cell/B-cell interaction during early lymphoid development.

Immunogen Information

Gene ID

924

Swiss Prot

P09564

Immunogen

Recombinant protein (or fragment). This information is considered to be commercially sensitive.

Synonyms

GP40; TP41; Tp40; LEU-9

Contact

☎ | 400-999-6126

✉ | cn.market@abclonal.com.cn

🌐 | www.abclonal.com.cn

Product Information

Source

Rabbit

Isotype

IgG

Purification

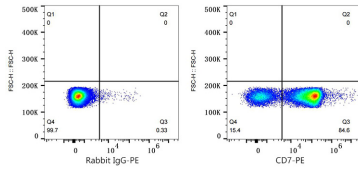
Affinity purification

Storage

Store at 2-8°C. Avoid freeze.

Buffer: PBS with 0.09% Sodium azide, 0.2% BSA, pH7.3.

Validation Data



Flow cytometry: 1X10⁶ Human PBMC were surface-stained with PE Rabbit IgG isotype control (A24172,5 µl/Test,left) or PE Rabbit anti-Human CD7 mAb (A27376,5 µl/Test,right). Cells in the lymphocytes gate were used for analysis.