

PE Rabbit anti-Human/Monkey CD8a mAb

Catalog No.: A27397

Basic Information

Observed MW

Calculated MW

21kDa/25kDa/30kDa

Category

Primary antibody

Applications

FC

Cross-Reactivity

Human, Cynomolgus

CloneNo number

ARC55248

Conjugate

PE. Ex:565nm. Em:574nm.

Background

The CD8 antigen is a cell surface glycoprotein found on most cytotoxic T lymphocytes that mediates efficient cell-cell interactions within the immune system. The CD8 antigen acts as a coreceptor with the T-cell receptor on the T lymphocyte to recognize antigens displayed by an antigen presenting cell in the context of class I MHC molecules. The coreceptor functions as either a homodimer composed of two alpha chains or as a heterodimer composed of one alpha and one beta chain. Both alpha and beta chains share significant homology to immunoglobulin variable light chains. This gene encodes the CD8 alpha chain. Multiple transcript variants encoding different isoforms have been found for this gene. The major protein isoforms of this gene differ by the presence or absence of a transmembrane domain and thus differ in being a membrane-anchored or secreted protein.

Recommended Dilutions

FC 5 μ l per 10^6 cells in
100 μ l volume

Immunogen Information

Gene ID

925

Swiss Prot

P01732

Immunogen

Recombinant protein (or fragment). This information is considered to be commercially sensitive.

Synonyms

CD8; p32; Leu2; CD8alpha

Contact

☎ | 400-999-6126

✉ | cn.market@abclonal.com.cn

🌐 | www.abclonal.com.cn

Product Information

Source

Rabbit

Isotype

IgG

Purification

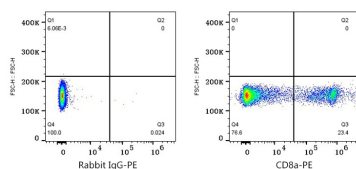
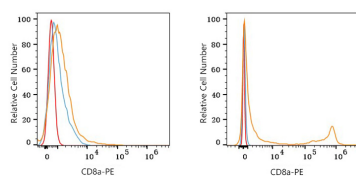
Affinity purification

Storage

Store at 2-8°C. Avoid freeze.

Buffer: PBS with 0.09% Sodium azide, 0.2% BSA, pH7.3.

Validation Data



Flow cytometry: 1×10^6 293T cells (negative control, left) and Human PBMC (right) were surface-stained with PE Rabbit anti-Human/Monkey CD8a mAb (A27397, 5 μ l/Test, orange line) or PE Rabbit IgG isotype control (A24172, 5 μ l/Test, blue line). Non-fluorescently stained cells were used as blank control (red line). Cells in the Lymphocytes gate were used for analysis.

Flow cytometry: 1×10^6 Human PBMC were surface-stained with PE Rabbit IgG isotype control (A24172, 5 μ l/Test, left) or PE Rabbit anti-Human/Monkey CD8a mAb (A27397, 5 μ l/Test, right). Cells in the Lymphocytes gate were used for analysis.