

PE/Cyanine7 Rabbit anti-Human/Monkey CD25 mAb

Catalog No.: A27400

Basic Information

Observed MW**Calculated MW**

31kDa

Category

Primary antibody

Applications

FC

Cross-Reactivity

Human, Cynomolgus

CloneNo number

ARC58045

Conjugate

PE-Cy7. Ex:565nm. Em:778nm.

Recommended Dilutions

FC 5 μ l per 10^6 cells in
100 μ l volume

Background

The interleukin 2 (IL2) receptor alpha (IL2RA) and beta (IL2RB) chains, together with the common gamma chain (IL2RG), constitute the high-affinity IL2 receptor. Homodimeric alpha chains (IL2RA) result in low-affinity receptor, while homodimeric beta (IL2RB) chains produce a medium-affinity receptor. Normally an integral-membrane protein, soluble IL2RA has been isolated and determined to result from extracellular proteolysis. Alternately-spliced IL2RA mRNAs have been isolated, but the significance of each is presently unknown. Mutations in this gene are associated with interleukin 2 receptor alpha deficiency. Patients with severe Coronavirus Disease 2019 (COVID-19), the disease caused by the novel severe acute respiratory syndrome coronavirus 2 (SARS-CoV-2), have significantly elevated levels of IL2R in their plasma. Similarly, serum IL-2R levels are found to be elevated in patients with different types of carcinomas. Certain IL2RA and IL2RB gene polymorphisms have been associated with lung cancer risk.

Immunogen Information

Gene ID

3559

Swiss Prot

P01589

Immunogen

Recombinant protein (or fragment). This information is considered to be commercially sensitive.

Synonyms

p55; CD25; IL2R; IMD41; TCGFR; IDDM10

Contact

 | 400-999-6126 | cn.market@abclonal.com.cn | www.abclonal.com.cn

Product Information

Source

Rabbit

Isotype

IgG

Purification

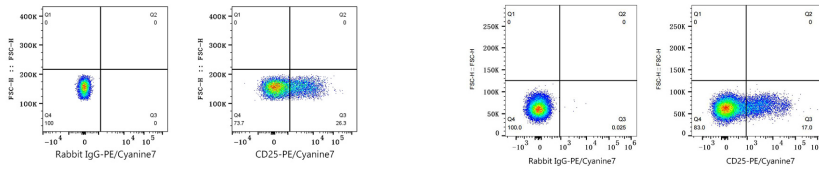
Affinity purification

Storage

Store at 2-8°C. Avoid freeze.

Buffer: PBS with 0.09% Sodium azide, 0.2% BSA, pH7.3.

Validation Data



Flow cytometry: 1×10^6 Human PBMC were surface-stained with PE/Cyanine7 Rabbit IgG isotype control (5 μ l/Test,left) or PE/Cyanine7 Rabbit anti-Human/Monkey CD25 mAb (A27400,5 μ l/Test,right). Cells in the lymphocyte gate were used for analysis.

Flow cytometry: 1×10^6 Cynomolgus PBMC were surface-stained with PE/Cyanine7 Rabbit IgG isotype control (5 μ l/Test,left) or PE/Cyanine7 Rabbit anti-Human/Monkey CD25 mAb (A27400,5 μ l/Test,right). Cells in the lymphocyte gate were used for analysis.