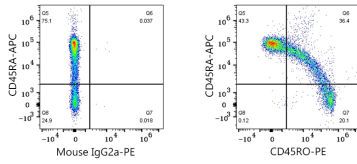


Validation Data



Flow cytometry: 1×10^6 Human PBMC were surface-stained with APC anti-human CD45RA Antibody (5 μ l/Test) and PE Mouse IgG2a isotype control (5 μ l/Test, left) or PE Mouse anti-Human CD45RO mAb (A27415, 5 μ l/Test, right). Cells in the lymphocytes gate were used for analysis.