

GRB14 Rabbit pAb

Catalog No.: A2742

Basic Information

Observed MW

61kDa

Calculated MW

61kDa

Category

Primary antibody

Applications

ELISA, WB

Cross-Reactivity

Human, Mouse, Rat

Background

The product of this gene belongs to a small family of adapter proteins that are known to interact with a number of receptor tyrosine kinases and signaling molecules. This gene encodes a growth factor receptor-binding protein that interacts with insulin receptors and insulin-like growth-factor receptors. This protein likely has an inhibitory effect on receptor tyrosine kinase signaling and, in particular, on insulin receptor signaling. This gene may play a role in signaling pathways that regulate growth and metabolism. Alternative splicing results in multiple transcript variants.

Recommended Dilutions

WB 1:500 - 1:1000

Immunogen Information

Gene ID

2888

Swiss Prot

Q14449

Immunogen

Recombinant fusion protein containing a sequence corresponding to amino acids 1-180 of human GRB14 (NP_004481.2).

Synonyms

GRB14

Contact

 | 400-999-6126

 | cn.market@abclonal.com.cn

 | www.abclonal.com.cn

Product Information

Source

Rabbit

Isotype

IgG

Purification

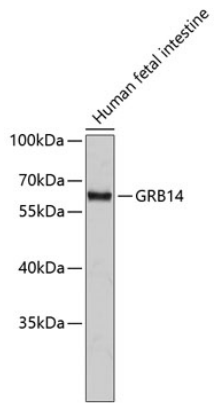
Affinity purification

Storage

Store at -20°C. Avoid freeze / thaw cycles.

Buffer: PBS with 0.01% thimerosal, 50% glycerol, pH7.3.

Validation Data



Western blot analysis of lysates from human fetal intestine, using GRB14 Rabbit pAb (A2742).
Secondary antibody: HRP Goat Anti-Rabbit IgG (H+L) (AS014) at 1:10000 dilution.
Lysates/proteins: 25µg per lane.
Blocking buffer: 3% nonfat dry milk in TBST.