

POU1F1 Rabbit pAb

Catalog No.: A27420

Basic Information

Observed MW

33kDa

Calculated MW

33kDa

Category

Primary antibody

Applications

WB,IF-P,IHC-P,ELISA

Cross-Reactivity

Human, Mouse, Rat

Background

This gene encodes a member of the POU family of transcription factors that regulate mammalian development. The protein regulates expression of several genes involved in pituitary development and hormone expression. Mutations in this genes result in combined pituitary hormone deficiency. Multiple transcript variants encoding different isoforms have been found for this gene.

Recommended Dilutions

WB 1:3000 - 1:12000

IF-P 1:100 - 1:1000

IHC-P 1:500 - 1:2000

ELISA Recommended starting concentration is 1 µg/mL. Please optimize the concentration based on your specific assay requirements.

Immunogen Information

Gene ID

5449

Swiss Prot

P28069

Immunogen

Recombinant protein (or fragment). This information is considered to be commercially sensitive.

Synonyms

PIT1; CPHD1; GHF-1; Pit-1; POU1F1a

Contact

☎ | 400-999-6126

✉ | cn.market@abclonal.com.cn

🌐 | www.abclonal.com.cn

Product Information

Source

Rabbit

Isotype

IgG

Purification

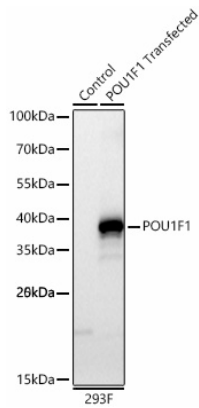
Affinity purification

Storage

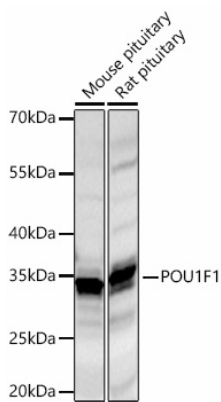
Store at -20°C. Avoid freeze / thaw cycles.

Buffer: PBS with 0.09% Sodium azide, 50% glycerol, pH7.3.

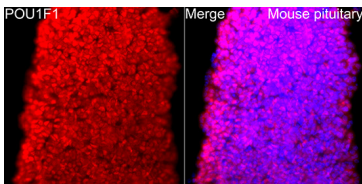
Validation Data



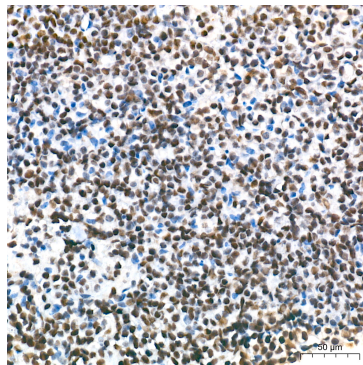
Western blot analysis of lysates from wild type (WT) and 293F cells transfected with POU1F1 using POU1F1 Rabbit pAb (A27420) at 1:3000 dilution incubated overnight at 4°C.
Secondary antibody: HRP-conjugated Goat anti-Rabbit IgG (H+L) (AS014) at 1:10000 dilution.
Lysates/proteins: 20 µg per lane.
Blocking buffer: 3% nonfat dry milk in TBST.
Detection: ECL Basic Kit (RM00020)
Exposure time: 5s.



Western blot analysis of various lysates using POU1F1 Rabbit pAb (A27420) at 1:3000 dilution incubated overnight at 4°C.
Secondary antibody: HRP-conjugated Goat anti-Rabbit IgG (H+L) (AS014) at 1:10000 dilution.
Lysates/proteins: 25 µg per lane.
Blocking buffer: 3% nonfat dry milk in TBST.
Detection: ECL Basic Kit (RM00020).
Exposure time: 10s.



Immunofluorescence analysis of Mouse pituitary tissue using POU1F1 Rabbit pAb (A27420) at a dilution of 1:100 (40x lens).
Secondary antibody: Cy3-conjugated Goat anti-Rabbit IgG (H+L)(AS007) at 1:500 dilution. Blue: DAPI for nuclear staining. High pressure antigen retrieval performed with 0.01M Citrate Buffer (pH 6.0) prior to IF staining.



Immunohistochemistry analysis of paraffin-embedded Mouse pituitary tissue using POU1F1 Rabbit pAb (A27420) at a dilution of 1:2000 (40x lens). High pressure antigen retrieval performed with 0.01M Tris-EDTA Buffer (pH 9.0) prior to IHC staining.