

PE Rabbit anti-Human MICA/MICB mAb

Catalog No.: A27428

Basic Information

Observed MW

Calculated MW

4kDa/31kDa/37kDa/43kDa

Category

Primary antibody

Applications

FC

Cross-Reactivity

Human

CloneNo number

ARC65920

Conjugate

PE. Ex:565nm. Em:574nm.

Background

This gene encodes a heavily glycosylated protein which is a ligand for the NKG2D type II receptor. Binding of the ligand activates the cytolytic response of natural killer (NK) cells, CD8 alphabeta T cells, and gammadelta T cells which express the receptor. This protein is stress-induced and is similar to MHC class I molecules; however, it does not associate with beta-2-microglobulin or bind peptides. Alternative splicing results in multiple transcript variants.

Recommended Dilutions

FC 5 µl per 10⁶ cells in
100 µl volume

Immunogen Information

Gene ID

100507436/4277

Swiss Prot

Q29983/Q29980

Immunogen

Recombinant protein (or fragment). This information is considered to be commercially sensitive.

Synonyms

MIC-A; PERB11.1; PERB11.2; MICB

Contact

☎ | 400-999-6126

✉ | cn.market@abclonal.com.cn

🌐 | www.abclonal.com.cn

Product Information

Source

Rabbit

Isotype

IgG

Purification

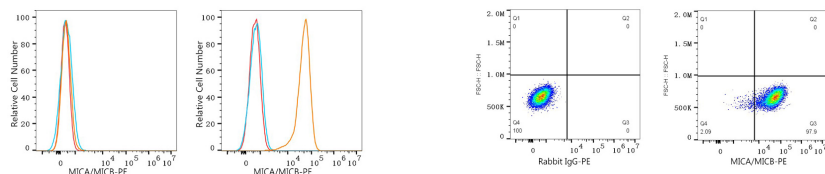
Affinity purification

Storage

Store at 2-8°C. Avoid freeze.

Buffer: PBS with 0.09% Sodium azide, 0.2% BSA, pH7.3.

Validation Data



Flow cytometry: 1×10^6 SH-SY5Y cells (negative control, left) and K-562 cells (right) were surface-stained with PE Rabbit anti-Human MICA/MICB mAb (A27428, 5 μ l/Test, orange line) or PE Rabbit IgG isotype control (A24172, 5 μ l/Test, blue line). Non-fluorescently stained cells were used as blank control (red line).

Flow cytometry: 1×10^6 K-562 cells were surface-stained with PE Rabbit IgG isotype control (A24172, 5 μ l/Test, left) or PE Rabbit anti-Human MICA/MICB mAb (A27428, 5 μ l/Test, right).