

# PE-CF594 Rabbit anti-Human CD34 mAb

Catalog No.: A27429

## Basic Information

### Observed MW

### Calculated MW

41kDa

### Category

Primary antibody

### Applications

FC

### Cross-Reactivity

Human

### CloneNo number

ARC67795

### Conjugate

PE-CF594. Ex:566nm. Em:615nm.

## Background

The protein encoded by this gene may play a role in the attachment of stem cells to the bone marrow extracellular matrix or to stromal cells. This single-pass membrane protein is highly glycosylated and phosphorylated by protein kinase C. Two transcript variants encoding different isoforms have been found for this gene.

## Recommended Dilutions

**FC** 5  $\mu$ l per  $10^6$  cells in  
100  $\mu$ l volume

## Immunogen Information

### Gene ID

947

### Swiss Prot

P28906

### Immunogen

Recombinant protein (or fragment). This information is considered to be commercially sensitive.

### Synonyms

CD34

## Contact

 | 400-999-6126

 | [cn.market@abclonal.com.cn](mailto:cn.market@abclonal.com.cn)

 | [www.abclonal.com.cn](http://www.abclonal.com.cn)

## Product Information

### Source

Rabbit

### Isotype

IgG

### Purification

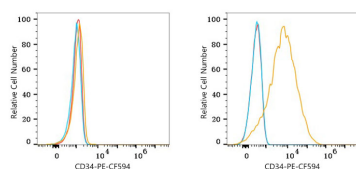
Affinity purification

### Storage

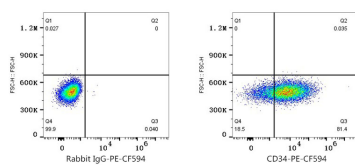
Store at 2-8°C. Avoid freeze.

Buffer: PBS with 0.09% Sodium azide, 0.2% BSA, pH7.3.

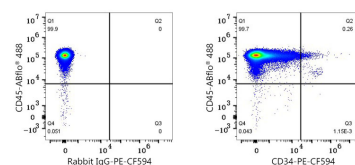
## Validation Data



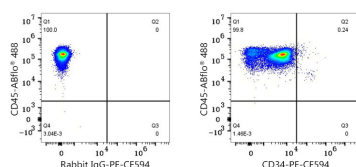
Flow cytometry: 1X10<sup>6</sup> HeLa cells (negative control, left) and MOLT-4 cells (right) were surface-stained with PE-CF594 Rabbit anti-Human CD34 mAb (A27429, 5 µl/Test, orange line) or PE-CF594 Rabbit IgG isotype control (5 µl/Test, blue line). Non-fluorescently stained cells were used as blank control (red line).



Flow cytometry: 1X10<sup>6</sup> MOLT-4 cells were surface-stained with PE-CF594 Rabbit IgG isotype control (5 µl/Test, left) or PE-CF594 Rabbit anti-Human CD34 mAb (A27429, 5 µl/Test, right).



Flow cytometry: 1X10<sup>6</sup> Human PBMC were surface-stained with ABflo® 488 Rabbit anti-Human CD45 mAb (A22494, 5 µl/Test) and PE-CF594 Rabbit IgG isotype control (5 µl/Test, left) or PE-CF594 Rabbit anti-Human CD34 mAb (A27429, 5 µl/Test, right). Cells in the lymphocyte gate were used for analysis.



Flow cytometry: 1X10<sup>6</sup> Human PBMC were surface-stained with ABflo® 488 Rabbit anti-Human CD45 mAb (A22494, 5 µl/Test) and PE-CF594 Rabbit IgG isotype control (5 µl/Test, left) or PE-CF594 Rabbit anti-Human CD34 mAb (A27429, 5 µl/Test, right). Cells in the Monocyte gate were used for analysis.