

CFHR1 Rabbit pAb

Catalog No.: A2743

Basic Information

Observed MW

43kDa

Calculated MW

38kDa

Category

Primary antibody

Applications

ELISA, WB

Cross-Reactivity

Human, Mouse, Rat

Background

This gene encodes a secreted protein belonging to the complement factor H protein family. It binds to *Pseudomonas aeruginosa* elongation factor Tuf together with plasminogen, which is proteolytically activated. It is proposed that Tuf acts as a virulence factor by acquiring host proteins to the pathogen surface, controlling complement, and facilitating tissue invasion. Mutations in this gene are associated with an increased risk of atypical hemolytic-uremic syndrome.

Recommended Dilutions

WB 1:500 - 1:2000

Immunogen Information

Gene ID

3078

Swiss Prot

Q03591

Immunogen

Recombinant fusion protein containing a sequence corresponding to amino acids 151-330 of human CFHR1 (NP_002104.2).

Synonyms

H36; CFHL; FHR1; HFL1; HFL2; CFHL1; FHL-1; FHR-1; H36-1; H36-2; CFHL1P; CFHR1P; CFHR1

Contact

☎ | 400-999-6126

✉ | cn.market@abclonal.com.cn

🌐 | www.abclonal.com.cn

Product Information

Source

Rabbit

Isotype

IgG

Purification

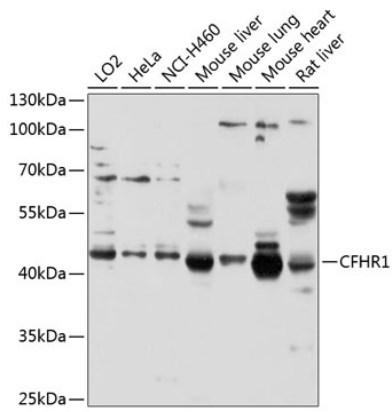
Affinity purification

Storage

Store at -20°C. Avoid freeze / thaw cycles.

Buffer: PBS with 0.02% sodium azide, 50% glycerol, pH 7.3.

Validation Data



Western blot analysis of extracts of various cell lines, using CFHR1 antibody (A2743) at 1:1000 dilution.
Secondary antibody: HRP Goat Anti-Rabbit IgG (H+L) (AS014) at 1:10000 dilution.
Lysates/proteins: 25 μ g per lane.
Blocking buffer: 3% nonfat dry milk in TBST.
Detection: ECL Basic Kit (RM00020).
Exposure time: 30s.