

ABflo® 700 Rabbit anti-Mouse CD161c/NK1.1 mAb

Catalog No.: A27430

Basic Information

Observed MW

Calculated MW

25kDa

Category

Primary antibody

Applications

FC

Cross-Reactivity

Mouse

CloneNo number

ARC57666

Conjugate

ABflo® 700. Ex:690nm. Em:713nm.

Background

Enables identical protein binding activity and signaling receptor activity. Acts upstream of or within natural killer cell activation and positive regulation of natural killer cell mediated cytotoxicity. Located in external side of plasma membrane. Is integral component of plasma membrane. Is expressed in thymus primordium. Orthologous to human KLRB1 (killer cell lectin like receptor B1).

Recommended Dilutions

FC 5 µl per 10⁶ cells in
100 µl volume

Immunogen Information

Gene ID

17059

Swiss Prot

P27814

Immunogen

Recombinant protein (or fragment). This information is considered to be commercially sensitive.

Synonyms

Nk1; Ly59; Nk-1; CD161; Ly-59; Ly55c; NK1.1; NKRP1; Nk1.2; Klrb1b; NK-RP1; Nk-1.2; Nkrp1b; Nkrp1c; ly-55c; NKRP140; NKR-P1.9

Contact

 | 400-999-6126

 | cn.market@abclonal.com.cn

 | www.abclonal.com.cn

Product Information

Source

Rabbit

Isotype

IgG

Purification

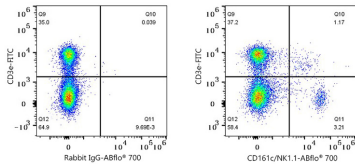
Affinity purification

Storage

Store at 2-8°C. Avoid freeze.

Buffer: PBS with 0.09% Sodium azide, 0.2% BSA, pH7.3.

Validation Data



Flow cytometry: 1X10⁶ C57BL/6 mouse splenocytes were surface-stained with FITC Anti-Mouse CD3e mAb,(A23322,2 µg/mL) and ABflo® 700 Rabbit IgG isotype control (A25976,5 µl/Test,left) or ABflo® 700 Rabbit anti-Mouse CD161c/NK1.1 mAb (A27430,5 µl/Test,right).