

PE Rabbit anti-Human TNF- α mAb

Catalog No.: A27433

Basic Information

Observed MW

Calculated MW

26kDa

Category

Primary antibody

Applications

FC (intra)

Cross-Reactivity

Human

CloneNo number

ARC58925

Conjugate

PE. Ex:565nm. Em:574nm.

Background

This gene encodes a multifunctional proinflammatory cytokine that belongs to the tumor necrosis factor (TNF) superfamily. This cytokine is mainly secreted by macrophages. It can bind to, and thus functions through its receptors TNFRSF1A/TNFR1 and TNFRSF1B/TNFR. This cytokine is involved in the regulation of a wide spectrum of biological processes including cell proliferation, differentiation, apoptosis, lipid metabolism, and coagulation. This cytokine has been implicated in a variety of diseases, including autoimmune diseases, insulin resistance, psoriasis, rheumatoid arthritis ankylosing spondylitis, tuberculosis, autosomal dominant polycystic kidney disease, and cancer. Mutations in this gene affect susceptibility to cerebral malaria, septic shock, and Alzheimer disease. Knockout studies in mice also suggested the neuroprotective function of this cytokine.

Recommended Dilutions

FC (intra) 5 μ l per 10^6 cells in
100 μ l volume

Immunogen Information

Gene ID

7124

Swiss Prot

P01375

Immunogen

Recombinant protein (or fragment). This information is considered to be commercially sensitive.

Synonyms

DIF; TNFA; TNFSF2; TNLG1F; TNF-alpha

Contact

☎ | 400-999-6126

✉ | cn.market@abclonal.com.cn

🌐 | www.abclonal.com.cn

Product Information

Source

Rabbit

Isotype

IgG

Purification

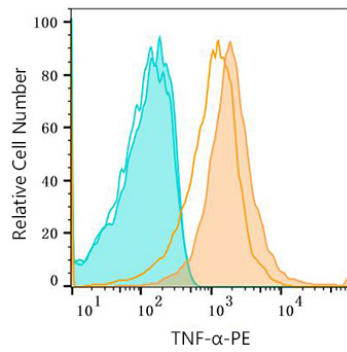
Affinity purification

Storage

Store at 2-8°C. Avoid freeze.

Buffer: PBS with 0.09% Sodium azide, 0.2% BSA, pH7.3.

Validation Data



Flow cytometry: 1X10⁶ Human PBMC (untreated, solid lines) and Human PBMC (treated with 5 ng/ml PMA and 500 ng Ionomycin in the presence of Brefeldin A for 4 hours, filled lines) were intracellularly-stained with PE Rabbit anti-Human TNF-α mAb (A27433, 5 µl/Test, orange) or PE Rabbit IgG isotype control (A24172, 5 µl/Test, blue).