

Alpha-synuclein Truncation 1-119 mAb [MJFF-C-24D2]

Catalog No.: A27453

Basic Information

Observed MW

Refer to figures

Calculated MW

14kDa

Category

Primary antibody

Applications

Slot blot, IF/ICC, ELISA

Cross-Reactivity

Human, Mouse

CloneNo number

ARC5168

Background

Target background: Alpha-synuclein is a member of the synuclein family, which also includes beta- and gamma-synuclein. Alpha-synuclein is a neuronal protein that plays many roles in synaptic activity such as membrane trafficking of synaptic vesicles and neurotransmitter release. Multiplications in SNCA have been implicated in genetic forms of Parkinson disease and pathological post-translational modifications of alpha-synuclein are a hallmark of Parkinson's disease. These modifications include phosphorylation, nitration, acetylation, truncation, and aggregation. C-terminal truncations of alpha-synuclein lead to increased aggregation. Evidence for the 1-119 truncation in brains of patients with Parkinson's disease, Lewy Body Dementia (LBD), Multiple Systems Atrophy (MSA), and Alzheimer's disease.

Recommended Dilutions

IF/ICC 1:200 - 1:1000**Slot blot** 1:500 - 1:1000

ELISA Recommended starting concentration is 1 µg/mL. Please optimize the concentration based on your specific assay requirements.

Immunogen Information

Gene ID

6622

Swiss Prot

P37840

Immunogen

Recombinant protein (or fragment). This information is considered to be commercially sensitive.

Synonyms

PD1; NACP; PARK1; PARK4

Contact

 | 400-999-6126 | cn.market@abclonal.com.cn | www.abclonal.com.cn

Product Information

Source

Rabbit

Isotype

IgG

Purification

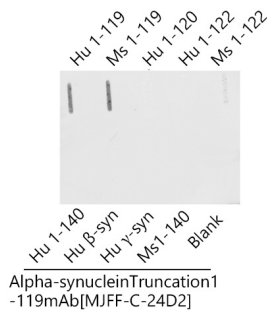
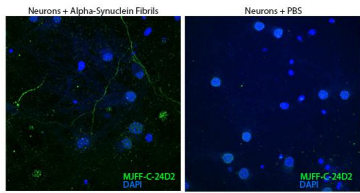
Affinity purification

Storage

Store at -20°C. Avoid freeze / thaw cycles.

Buffer: PBS with 0.09% Sodium azide, 0.05% BSA, 50% glycerol, pH7.3.

Validation Data



Confocal imaging of Mouse primary hippocampal neuron cells(treated with Alpha-Synuclein Fibrils) and Mouse primary hippocampal neuron cells(treated with PBS) using Alpha-synuclein Truncation 1-119 mAb [MJFF-C-24D2] (A27453, dilution 1:1000) followed by a further incubation with Goat anti-Rabbit IgG (H+L), AlexaFluor 488 (A-11034, dilution 1:500) (Green). DAPI was used for nuclear staining (Blue). Objective: 60x.

Slot blot analysis of various lysates using Alpha-synuclein Truncation 1-119 mAb [MJFF-C-24D2] (A27453) at 1:2000 dilution incubated overnight at 4°C. Secondary antibody: HRP-conjugated Goat anti-Rabbit IgG (H+L) at 1:10000 dilution. Lysates/proteins: 200 ng per lane. Blocking buffer: Intercept Blocking Buffer.