

ABflo® 488 Rat anti-Mouse F4/80 mAb

Catalog No.: A27479 **1 Publications**

Basic Information

Observed MW

Calculated MW

102kDa

Category

Primary antibody

Applications

FC

Cross-Reactivity

Mouse

CloneNo number

ATC10004

Conjugate

ABflo® 488. Ex:491nm. Em:516nm.

Recommended Dilutions

FC 5 µl per 10⁶ cells in
100 µl volume

Background

Predicted to enable G protein-coupled receptor activity. Predicted to be involved in adenylate cyclase-activating G protein-coupled receptor signaling pathway. Predicted to act upstream of or within G protein-coupled receptor signaling pathway and adaptive immune response. Located in external side of plasma membrane. Is expressed in several structures, including cardiovascular system; central nervous system; genitourinary system; hemolymphoid system; and intestine. Orthologous to human ADGRE1 (adhesion G protein-coupled receptor E1).

Immunogen Information

Gene ID

13733

Swiss Prot

Q61549

Immunogen

Recombinant protein (or fragment). This information is considered to be commercially sensitive.

Synonyms

Emr1; Ly71; F4/80; Gpf480; TM7LN3; DD7A5-7; EGF-TM7; Adgre1

Contact

 | 400-999-6126

 | cn.market@abclonal.com.cn

 | www.abclonal.com.cn

Product Information

Source

Rat

Isotype

Rat / IgG2a, kappa

Purification

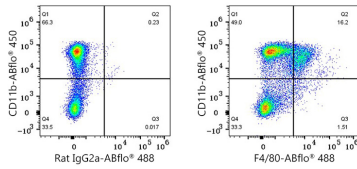
Affinity purification

Storage

Store at 2-8°C. Avoid freeze.

Buffer: PBS with 0.09% Sodium azide, 0.2% BSA, pH7.3.

Validation Data



Flow cytometry: 1×10^6 C57BL/6 mouse bone marrow cells were surface-stained with ABflo® 450 Rabbit anti-Mouse CD11b mAb (A26229, 5 μ l/Test) and ABflo® 488 Rat IgG2a isotype control (5 μ l/Test, left) or ABflo® 488 Rat anti-Mouse F4/80 mAb (A27479, 5 μ l/Test, right). Total viable cells were used for analysis.