

# IMMT Rabbit pAb

Catalog No.: A2751 **1 Publications**

## Basic Information

### Observed MW

90kDa

### Calculated MW

84kDa

### Category

Primary antibody

### Applications

ELISA, WB, IHC-P, IF/ICC

### Cross-Reactivity

Human, Mouse, Rat

## Background

Enables RNA binding activity. Involved in cristae formation. Located in mitochondrial inner membrane. Part of MICOS complex.

## Recommended Dilutions

<b>WB</b>	1:500 - 1:1000
<b>IHC-P</b>	1:50 - 1:200
<b>IF/ICC</b>	1:50 - 1:200

## Immunogen Information

### Gene ID

10989

### Swiss Prot

Q16891

### Immunogen

Recombinant fusion protein containing a sequence corresponding to amino acids 120-270 of human IMMT (NP\_006830.2).

### Synonyms

HMP; P87; P89; PIG4; Mic60; PIG52; MINOS2; P87/89; MICOS60; IMMT

## Contact

☎ | 400-999-6126

✉ | [cn.market@abclonal.com.cn](mailto:cn.market@abclonal.com.cn)

🌐 | [www.abclonal.com.cn](http://www.abclonal.com.cn)

## Product Information

### Source

Rabbit

### Isotype

IgG

### Purification

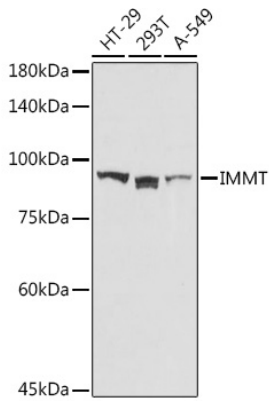
Affinity purification

### Storage

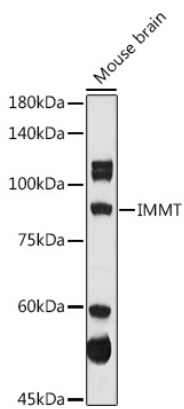
Store at -20°C. Avoid freeze / thaw cycles.

Buffer: PBS with 0.02% sodium azide, 50% glycerol, pH 7.3.

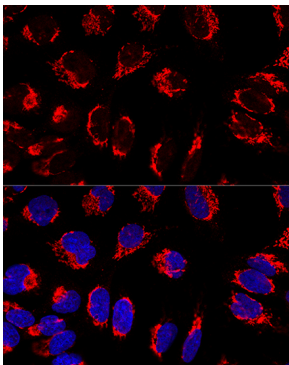
## Validation Data



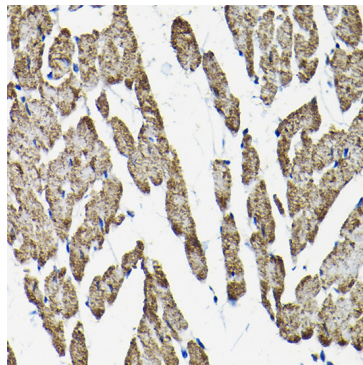
Western blot analysis of various lysates using IMMT Rabbit pAb (A2751) at 1:1000 dilution.  
Secondary antibody: HRP Goat Anti-Rabbit IgG (H+L) (AS014) at 1:10000 dilution.  
Lysates/proteins: 25µg per lane.  
Blocking buffer: 3% nonfat dry milk in TBST.  
Detection: ECL Basic Kit (RM00020).  
Exposure time: 30s.



Western blot analysis of lysates from Mouse brain, using IMMT Rabbit pAb (A2751) at 1:1000 dilution.  
Secondary antibody: HRP Goat Anti-Rabbit IgG (H+L) (AS014) at 1:10000 dilution.  
Lysates/proteins: 25µg per lane.  
Blocking buffer: 3% nonfat dry milk in TBST.  
Detection: ECL Enhanced Kit (RM00021).  
Exposure time: 180s.



Confocal immunofluorescence analysis of U2OS cells using IMMT Rabbit pAb (A2751) at dilution of 1:100. Blue: DAPI for nuclear staining.



Immunohistochemistry analysis of IMMT in paraffin-embedded rat heart tissue using IMMT Rabbit pAb (A2751) at a dilution of 1:100 (40x lens). High pressure antigen retrieval was performed with 0.01 M citrate buffer (pH 6.0) prior to IHC staining.