

# Vinculin Rabbit mAb

Catalog No.: A2752 **Recombinant** **21 Publications**

## Basic Information

### Observed MW

124kDa

### Calculated MW

124kDa

### Category

Primary antibody

### Applications

ELISA, WB, IF/ICC

### Cross-Reactivity

Human, Mouse, Rat

### CloneNo number

ARC51900

## Background

Vinculin is a cytoskeletal protein associated with cell-cell and cell-matrix junctions, where it is thought to function as one of several interacting proteins involved in anchoring F-actin to the membrane. Defects in VCL are the cause of cardiomyopathy dilated type 1W. Dilated cardiomyopathy is a disorder characterized by ventricular dilation and impaired systolic function, resulting in congestive heart failure and arrhythmia. Multiple alternatively spliced transcript variants have been found for this gene, but the biological validity of some variants has not been determined.

## Recommended Dilutions

<b>WB</b>	1:300000 - 1:1280000
<b>IF/ICC</b>	1:50 - 1:200

## Immunogen Information

### Gene ID

7414

### Swiss Prot

P18206

### Immunogen

A synthetic peptide corresponding to a sequence within amino acids 800-900 of human Vinculin (NP\_054706.1).

### Synonyms

MV; MVCL; CMD1W; CMH15; HEL114; Vinculin

## Contact

☎ | 400-999-6126

✉ | [cn.market@abclonal.com.cn](mailto:cn.market@abclonal.com.cn)

🌐 | [www.abclonal.com.cn](http://www.abclonal.com.cn)

## Product Information

### Source

Rabbit

### Isotype

IgG

### Purification

Affinity purification

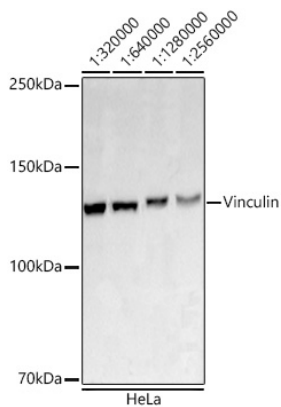
### Storage

Store at -20°C. Avoid freeze / thaw cycles.

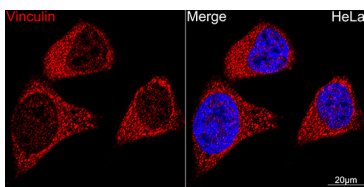
Buffer: PBS with 0.05% proclin300, 0.05% BSA, 50% glycerol, pH7.3.

## Validation Data

---



Western blot analysis of lysates from HeLa cells using Vinculin Rabbit mAb (A2752) at 1:320000-1:1280000 dilution incubated overnight at 4°C.  
Secondary antibody: HRP-conjugated Goat anti-Rabbit IgG (H+L) (AS014) at 1:10000 dilution.  
Lysates/proteins: 25 µg per lane.  
Blocking buffer: 3% nonfat dry milk in TBST.  
Detection: ECL Basic Kit (RM00020).  
Exposure time: 10s.



Confocal imaging of HeLa cells using Vinculin Rabbit mAb (A2752, dilution 1:100) (Red). DAPI was used for nuclear staining (blue). Objective: 60x.