

# PE Rabbit anti-Mouse CD155/Pvr mAb

Catalog No.: A27529

## Basic Information

### Observed MW

### Calculated MW

45kDa

### Category

Primary antibody

### Applications

FC

### Cross-Reactivity

Mouse

### CloneNo number

ARC67367

### Conjugate

PE. Ex:565nm. Em:574nm.

## Background

Enables dynein light chain binding activity. Acts upstream of or within cell migration and cell-cell adhesion. Located in cell surface and plasma membrane. Orthologous to human PVR (PVR cell adhesion molecule).

## Recommended Dilutions

FC 5  $\mu$ l per  $10^6$  cells in  
100  $\mu$ l volume

## Immunogen Information

### Gene ID

52118

### Swiss Prot

Q91WP1

### Immunogen

Recombinant protein (or fragment). This information is considered to be commercially sensitive.

### Synonyms

PVS; mE4; HVED; Taa1; CD155; Tage4; necl-5; D7Erd458e; 3830421F03Rik

## Contact

 | 400-999-6126

 | [cn.market@abclonal.com.cn](mailto:cn.market@abclonal.com.cn)

 | [www.abclonal.com.cn](http://www.abclonal.com.cn)

## Product Information

### Source

Rabbit

### Isotype

IgG

### Purification

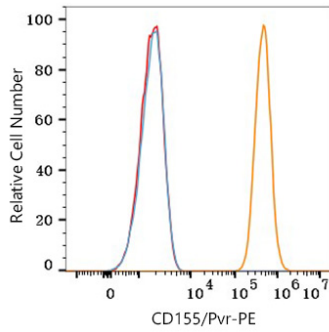
Affinity purification

### Storage

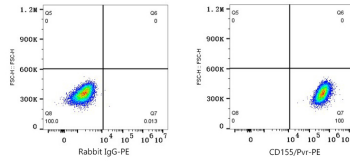
Store at 2-8°C. Avoid freeze.

Buffer: PBS with 0.09% Sodium azide, 0.2% BSA, pH7.3.

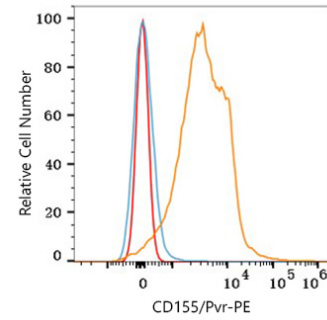
## Validation Data



Flow cytometry:  $1 \times 10^6$  NIH/3T3 cells were surface-stained with PE Rabbit anti-Mouse CD155/Pvr mAb (A27529,5  $\mu$ l/Test,orange line) or PE Rabbit IgG isotype control (A24172,5  $\mu$ l/Test,blue line) . Non-fluorescently stained cells were used as blank control (red line).



Flow cytometry:  $1 \times 10^6$  NIH/3T3 cells were surface-stained with PE Rabbit IgG isotype control (A24172,5  $\mu$ l/Test,left) or PE Rabbit anti-Mouse CD155/Pvr mAb (A27529,5  $\mu$ l/Test,right)



Flow cytometry:  $1 \times 10^6$  C57BL/6 mouse splenocytes were surface-stained with PE Rabbit anti-Mouse CD155/Pvr mAb (A27529,5  $\mu$ l/Test,orange line) or PE Rabbit IgG isotype control (A24172,5  $\mu$ l/Test,blue line) . Non-fluorescently stained cells were used as blank control (red line).