

# ABflo® 610 Rabbit anti-Human/Monkey CD69 mAb

Catalog No.: A27555

## Basic Information

### Observed MW

**Calculated MW**  
23kDa

**Category**  
Primary antibody

**Applications**  
FC

**Cross-Reactivity**  
Human, Cynomolgus

**CloneNo number**  
ARC68505

**Conjugate**  
ABflo® 610. Ex:421nm. Em:612nm.

## Background

This gene encodes a member of the calcium dependent lectin superfamily of type II transmembrane receptors. Expression of the encoded protein is induced upon activation of T lymphocytes, and may play a role in proliferation. Furthermore, the protein may act to transmit signals in natural killer cells and platelets.

## Recommended Dilutions

**FC** 5 µl per 10<sup>6</sup> cells in  
100 µl volume

## Immunogen Information

Gene ID	Swiss Prot
969	Q07108

### Immunogen

Recombinant protein (or fragment). This information is considered to be commercially sensitive.

### Synonyms

AIM; EA1; MLR-3; CLEC2C; GP32/28; BL-AC/P26

## Contact

☎	400-999-6126
✉	cn.market@abclonal.com.cn
🌐	www.abclonal.com.cn

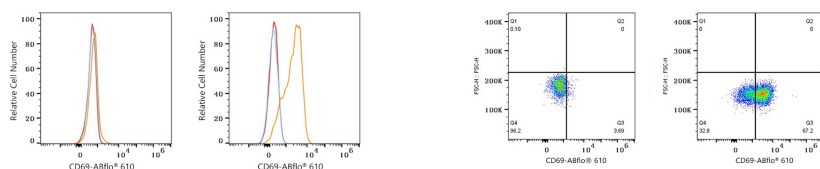
## Product Information

Source	Isotype	Purification
Rabbit	IgG	Affinity purification

### Storage

Store at 2-8°C. Avoid freeze.  
Buffer: PBS with 0.09% Sodium azide, 0.2% BSA, pH7.3.

## Validation Data



Flow cytometry:  $1 \times 10^6$  Human PBMC (untreated, left) and Human PBMC (treated with 500 ng/ml ionomycin and 10 ng/ml PMA for 3 hours, right) were surface-stained with ABflo® 610 Rabbit anti-Human CD69 mAb (A27555, 5  $\mu$ l/Test, orange line) or ABflo® 610 Rabbit IgG isotype control (A25826, 5  $\mu$ l/Test, blue line). Non-fluorescently stained cells were used as blank control (red line). Cells in the lymphocyte gate were used for analysis.

Flow cytometry:  $1 \times 10^6$  Human PBMC (untreated, left) and Human PBMC (treated with 500 ng/ml ionomycin and 10 ng/ml PMA for 3 hours, right) were surface-stained with ABflo® 610 Rabbit anti-Human CD69 mAb (A27555, 5  $\mu$ l/Test).