

MITD Rabbit pAb

Catalog No.: A27560

Basic Information

Observed MW

20kDa

Calculated MW

40KDa

Category

Primary antibody

Applications

WB

Cross-Reactivity

Human

Background

No

Recommended Dilutions

WB 1:1000 - 1:3000

Immunogen Information

Gene ID

3106

Swiss Prot

P01889

Immunogen

Synthetic peptide. This information is considered to be commercially sensitive.

Synonyms

HLA-B

Contact

☎ | 400-999-6126

✉ | cn.market@abclonal.com.cn

🌐 | www.abclonal.com.cn

Product Information

Source

Rabbit

Isotype

Purification

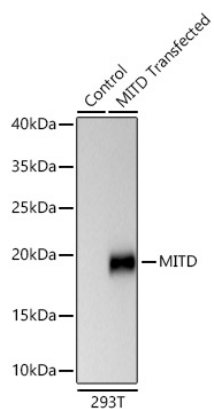
Affinity purification

Storage

Store at -20°C. Avoid freeze / thaw cycles.

Buffer: PBS containing 50% glycerol, preserved with proclin300 or sodium azide (as specified on the Certificate of Analysis), pH 7.3.

Validation Data



Western blot analysis of lysates from wild type (WT) and 293T cells transfected with MITD using MITD Rabbit pAb (A27560) at 1:3000 dilution incubated overnight at 4°C.
Secondary antibody: HRP-conjugated Goat anti-Rabbit IgG (H+L) (AS014) at 1:10000 dilution.
Lysates/proteins: 20 µg per lane.
Blocking buffer: 3% nonfat dry milk in TBST.
Detection: ECL Basic Kit (RM00020)
.Exposure time: 10s.