

ABflo® 488 Rabbit anti-Mouse/Human GATA3 mAb

Catalog No.: A27638

Basic Information

Observed MW

Calculated MW

48kDa

Category

Primary antibody

Applications

FC (intra)

Cross-Reactivity

Mouse, Human

CloneNo number

ARC74321

Conjugate

ABflo® 488. Ex:491nm. Em:516nm.

Recommended Dilutions

FC (intra) ≤0.25 µg per million cells
in 100 µl volume

Background

GATA-3 is a transcription factor belonging to the GATA family, which binds to the consensus DNA sequence (A/T)GATA(A/G), controlling various tissue-specific programs of gene expression and morphogenesis. It is widely expressed in tissues derived from the mesoderm and endoderm. GATA-3 has been proven to be an essential regulatory factor for immune cell function, the development of sympathetic neurons, and the maintenance of the differentiation state of epithelial cells.

Immunogen Information

Gene ID

14462

Swiss Prot

P23772

Immunogen

Recombinant protein (or fragment). This information is considered to be commercially sensitive.

Synonyms

jal; Gata-3

Contact

 | 400-999-6126

 | cn.market@abclonal.com.cn

 | www.abclonal.com.cn

Product Information

Source

Rabbit

Isotype

IgG

Purification

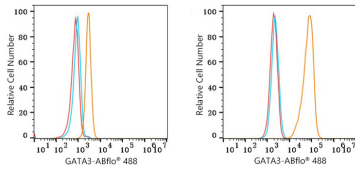
Affinity purification

Storage

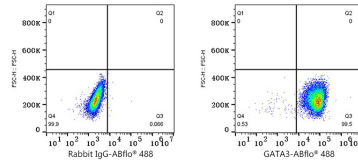
Store at 2-8°C. Avoid freeze.

Buffer: PBS with 0.09% Sodium azide, 0.2% BSA, pH7.3.

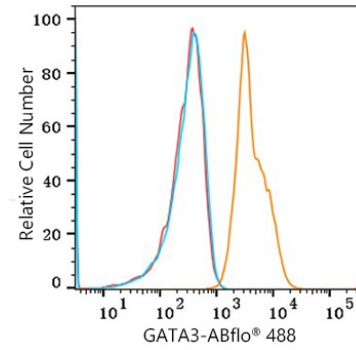
Validation Data



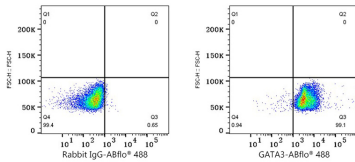
Flow cytometry: 1×10^6 HL-60 cells (negative control, left) and MCF7 (right) cells were intracellularly-stained with ABflo® 488 Rabbit anti-Mouse/Human GATA3 mAb (A27638, 0.25 μ g, orange line) or ABflo® 488 Rabbit IgG isotype control (A22069, 5 μ l/Test, blue line). Non-fluorescently stained cells were used as blank control (red line).



Flow cytometry: 1×10^6 MCF7 cells were intracellularly-stained with ABflo® 488 Rabbit IgG isotype control (A22069, 5 μ l/Test, left) or ABflo® 488 Rabbit anti-Mouse/Human GATA3 mAb (A27638, 0.25 μ g, right).



Flow cytometry: 1×10^6 BALB/c mouse thymocytes were intracellularly-stained with ABflo® 488 Rabbit anti-Mouse/Human GATA3 mAb (A27638, 0.25 μ g, orange line) or ABflo® 488 Rabbit IgG isotype control (A22069, 5 μ l/Test, blue line). Non-fluorescently stained cells were used as blank control (red line).



Flow cytometry: 1×10^6 BALB/c mouse thymocytes were intracellularly-stained with ABflo® 488 Rabbit IgG isotype control (A22069, 5 μ l/Test, left) or ABflo® 488 Rabbit anti-Mouse/Human GATA3 mAb (A27638, 0.25 μ g, right).