

ABflo® 610 Rabbit anti-Mouse CD49b/ITGA2 Rabbit mAb

Catalog No.: A27641 **Recombinant**

Basic Information

Observed MW

Calculated MW
129kDa

Category
Primary antibody

Applications
FC

Cross-Reactivity
Mouse

CloneNo number
ARC69348

Conjugate
ABflo® 610. Ex:421nm. Em:612nm.

Background

Enables amyloid-beta binding activity. Predicted to be involved in several processes, including cell surface receptor signaling pathway; positive regulation of cell migration; and positive regulation of cellular component organization. Predicted to act upstream of or within cell adhesion. Located in basal part of cell and external side of plasma membrane. Is expressed in several structures, including alimentary system; brain; cardiovascular system; eye; and genitourinary system. Human ortholog(s) of this gene implicated in several diseases, including Behcet's disease; artery disease (multiple); blood platelet disease (multiple); diabetes mellitus (multiple); and von Willebrand's disease (multiple). Orthologous to human ITGA2 (integrin subunit alpha 2).

Recommended Dilutions

FC ≤0.25 µg per million cells
in 100 µl volume

Immunogen Information

Gene ID 16398	Swiss Prot Q62469
-------------------------	-----------------------------

Immunogen

Recombinant protein (or fragment). This information is considered to be commercially sensitive.

Synonyms

DX5; GPIa; CD49B

Contact

☎		400-999-6126
✉		cn.market@abclonal.com.cn
🌐		www.abclonal.com.cn

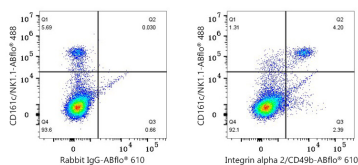
Product Information

Source Rabbit	Isotype IgG	Purification Affinity purification
-------------------------	-----------------------	--

Storage

Store at 2-8°C. Avoid freeze.
Buffer: PBS with 0.09% Sodium azide, 0.2% BSA, pH7.3.

Validation Data



Flow cytometry: 1×10^6 C57BL/6 mouse splenocytes were surface-stained with ABflo® 488 Rabbit anti-Mouse CD161c/NK1.1 mAb (A24922, 5 μ l/Test) and ABflo® 610 Rabbit IgG isotype control (A25826, 5 μ l/Test, left) or ABflo® 610 Rabbit anti-Mouse Integrin alpha 2/CD49b mAb (A27641, 0.25 μ g, right).