

# [KO Validated] Rbm7 Rabbit mAb

Catalog No.: A27655 **KO** **Validated** **Recombinant**

## Basic Information

### Observed MW

30-35kDa

### Calculated MW

30kDa

### Category

Primary antibody

### Applications

WB,IP,IF/ICC,IHC-P,ELISA

### Cross-Reactivity

Mouse, Rat

### CloneNo number

ARC73985

## Background

Predicted to enable 14-3-3 protein binding activity and RNA binding activity. Predicted to be involved in regulation of alternative mRNA splicing, via spliceosome and snRNA catabolic process. Located in nucleus. Orthologous to human RBM7 (RNA binding motif protein 7).

## Recommended Dilutions

<b>WB</b>	1:2500 - 1:10000
<b>IP</b>	0.5µg-4µg antibody for 200µg-400µg extracts of whole cells
<b>IF/ICC</b>	1:200 - 1:1000
<b>IHC-P</b>	1:2000 - 1:8000
<b>ELISA</b>	Recommended starting concentration is 1 µg/mL. Please optimize the concentration based on your specific assay requirements.

## Contact

☎ | 400-999-6126

✉ | [cn.market@abclonal.com.cn](mailto:cn.market@abclonal.com.cn)

🌐 | [www.abclonal.com.cn](http://www.abclonal.com.cn)

## Immunogen Information

### Gene ID

67010

### Swiss Prot

Q9CQT2

### Immunogen

Recombinant protein (or fragment). This information is considered to be commercially sensitive.

### Synonyms

1200007M24Rik; 1500011D06Rik

## Product Information

### Source

Rabbit

### Isotype

IgG

### Purification

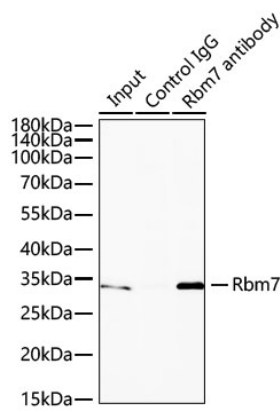
Affinity purification

### Storage

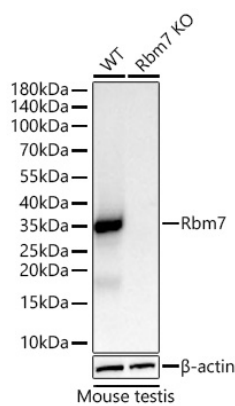
Store at -20°C. Avoid freeze / thaw cycles.

Buffer: PBS with 0.09% Sodium azide, 0.05% BSA, 50% glycerol, pH7.3.

Validation Data

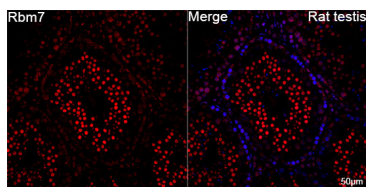


Immunoprecipitation of Rbm7 from 300 µg extracts of Mouse testis tissue was performed using 0.5 µg of [KO Validated] Rbm7 Rabbit mAb (A27655). Rabbit IgG isotype control (AC005) was used to precipitate the Control IgG sample. IP samples were eluted with 1X reducing Laemmli Buffer. The Input lane represents 10% of the total input. Western blot analysis of immunoprecipitates was conducted using [KO Validated] Rbm7 Rabbit mAb (A27655) at a dilution of 1:4000.

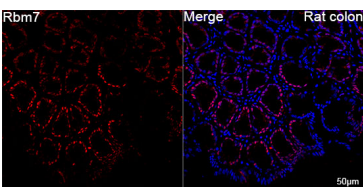


Western blot analysis of lysates from wild type (WT) and Rbm7 knockout (KO) mouse testis using [KO Validated] Rbm7 Rabbit mAb (A27655) at 1:5000 dilution incubated at room temperature for 1.5 hours. Secondary antibody: HRP-conjugated Goat anti-Rabbit IgG (H+L) (AS014) at 1:10000 dilution. Lysates/proteins: 25 µg per lane. Blocking buffer: 3% nonfat dry milk in TBST. Detection: ECL Basic Kit (RM00020). Exposure time: 60s.

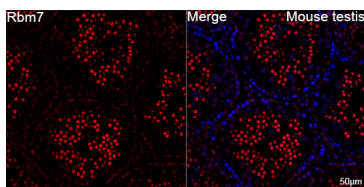
**WB samples for antibody validation are kindly provided by Dr. Shaorong Gao.**



Confocal imaging of paraffin-embedded Rat testis tissue using [KO Validated] Rbm7 Rabbit mAb (A27655, dilution 1:200) followed by a further incubation with Cy3 Goat Anti-Rabbit IgG (H+L) (AS007, dilution 1:500) (Red). DAPI was used for nuclear staining (Blue). High pressure antigen retrieval performed with 0.01M Citrate Buffer (pH 6.0) prior to IF staining. Objective: 40x.

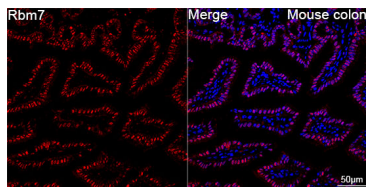


Confocal imaging of paraffin-embedded Rat colon tissue using [KO Validated] Rbm7 Rabbit mAb (A27655, dilution 1:200) followed by a further incubation with Cy3 Goat Anti-Rabbit IgG (H+L) (AS007, dilution 1:500) (Red). DAPI was used for nuclear staining (Blue). High pressure antigen retrieval performed with 0.01M Citrate Buffer (pH 6.0) prior to IF staining. Objective: 40x.

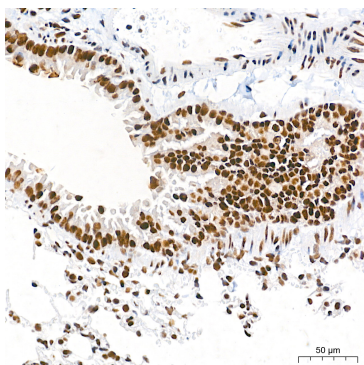


Confocal imaging of paraffin-embedded Mouse testis tissue using [KO Validated] Rbm7 Rabbit mAb (A27655, dilution 1:200) followed by a further incubation with Cy3 Goat Anti-Rabbit IgG (H+L) (AS007, dilution 1:500) (Red). DAPI was used for nuclear staining (Blue). High pressure antigen retrieval performed with 0.01M Citrate Buffer (pH 6.0) prior to IF staining. Objective: 40x.

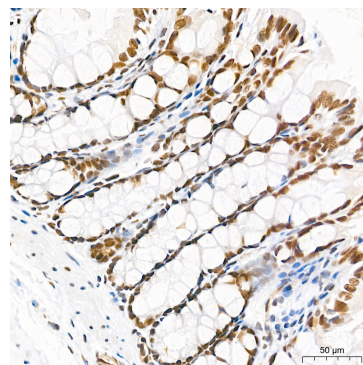
## Validation Data



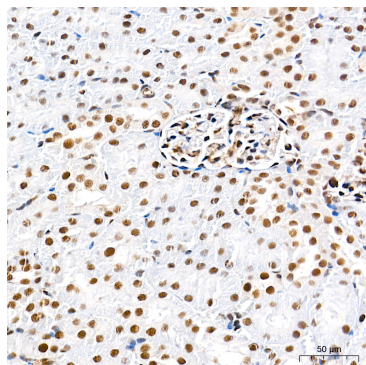
Confocal imaging of paraffin-embedded Mouse colon tissue using [KO Validated] Rbm7 Rabbit mAb (A27655, dilution 1:200) followed by a further incubation with Cy3 Goat Anti-Rabbit IgG (H+L) (AS007, dilution 1:500) (Red). DAPI was used for nuclear staining (Blue). High pressure antigen retrieval performed with 0.01M Citrate Buffer (pH 6.0) prior to IF staining. Objective: 40x.



Immunohistochemistry analysis of paraffin-embedded Mouse lung tissue using [KO Validated] Rbm7 Rabbit mAb (A27655) at a dilution of 1:5000 (40x lens). High pressure antigen retrieval performed with 0.01M Tris-EDTA Buffer (pH 9.0) prior to IHC staining.



Immunohistochemistry analysis of paraffin-embedded Rat colon tissue using [KO Validated] Rbm7 Rabbit mAb (A27655) at a dilution of 1:5000 (40x lens). High pressure antigen retrieval performed with 0.01M Tris-EDTA Buffer (pH 9.0) prior to IHC staining.



Immunohistochemistry analysis of paraffin-embedded Rat kidney tissue using [KO Validated] Rbm7 Rabbit mAb (A27655) at a dilution of 1:5000 (40x lens). High pressure antigen retrieval performed with 0.01M Tris-EDTA Buffer (pH 9.0) prior to IHC staining.