

BOULE/BOLL Rabbit mAb

Catalog No.: A27663 **Recombinant**

Basic Information

Observed MW

38-42kDa

Calculated MW

31kDa

Category

Primary antibody

Applications

WB,IP,IF-P,IHC-P,ELISA

Cross-Reactivity

Human, Mouse, Rat

CloneNo number

ARC73693

Background

This gene belongs to the DAZ gene family required for germ cell development. It encodes an RNA-binding protein which is more similar to Drosophila Boule than to human proteins encoded by genes DAZ (deleted in azoospermia) or DAZL (deleted in azoospermia-like). Loss of this gene function results in the absence of sperm in semen (azoospermia). Histological studies demonstrated that the primary defect is at the meiotic G2/M transition. Two alternatively spliced transcript variants encoding distinct isoforms have been found for this gene.

Recommended Dilutions

WB 1:13000 - 1:52000

IP 0.5µg-4µg antibody for
500µg-700µg extracts of
whole cells

IF-P 1:200 - 1:800

IHC-P 1:600 - 1:3000

ELISA Recommended starting
concentration is 1 µg/mL.
Please optimize the
concentration based on
your specific assay
requirements.

Immunogen Information

Gene ID

66037

Swiss Prot

Q8N9W6

Immunogen

Recombinant protein (or fragment). This information is considered to be commercially sensitive.

Synonyms

BOULE

Product Information

Source

Rabbit

Isotype

IgG

Purification

Affinity purification

Storage

Store at -20°C. Avoid freeze / thaw cycles.

Buffer: PBS with 0.09% Sodium azide, 0.05% BSA, 50% glycerol, pH7.3.

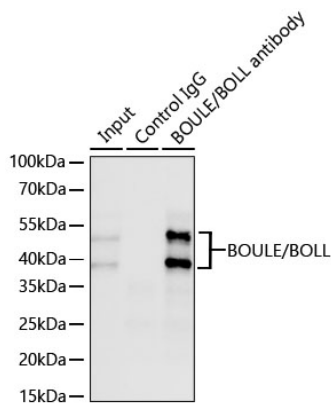
Contact

☎ | 400-999-6126

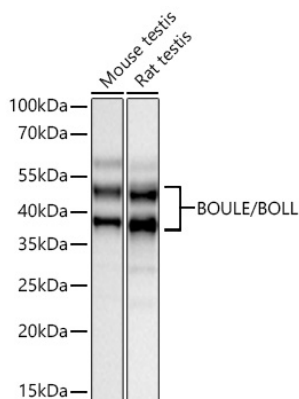
✉ | cn.market@abclonal.com.cn

🌐 | www.abclonal.com.cn

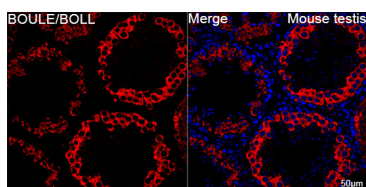
Validation Data



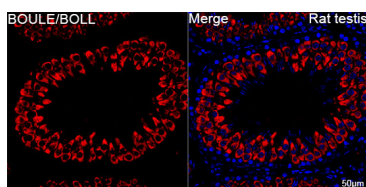
Immunoprecipitation of BOULE/BOLL from 600 µg extracts of Mouse testis tissue was performed using 1 µg of BOULE/BOLL Rabbit mAb (A27663). Rabbit IgG isotype control (AC005) was used to precipitate the Control IgG sample. IP samples were eluted with 1X reducing Laemmli Buffer. The Input lane represents 10% of the total input. Western blot analysis of immunoprecipitates was conducted using BOULE/BOLL Rabbit mAb (A27663) at a dilution of 1:10000.



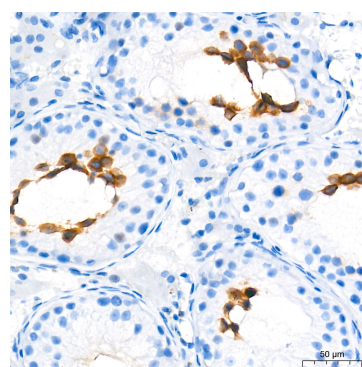
Western blot analysis of various lysates using BOULE/BOLL Rabbit mAb (A27663) at 1:13000 dilution incubated overnight at 4°C.
 Secondary antibody: HRP-conjugated Goat anti-Rabbit IgG (H+L) (AS014) at 1:10000 dilution.
 Lysates/proteins: 25 µg per lane.
 Blocking buffer: 3% nonfat dry milk in TBST.
 Detection: ECL Basic Kit (RM00020).
 Exposure time: 20s.



Confocal imaging of paraffin-embedded Mouse testis tissue using BOULE/BOLL Rabbit mAb (A27663, dilution 1:200) followed by a further incubation with Cy3 Goat Anti-Rabbit IgG (H+L) (AS007, dilution 1:500) (Red). DAPI was used for nuclear staining (Blue). High pressure antigen retrieval performed with 0.01M Citrate Buffer (pH 6.0) prior to IF staining. Objective: 40x.

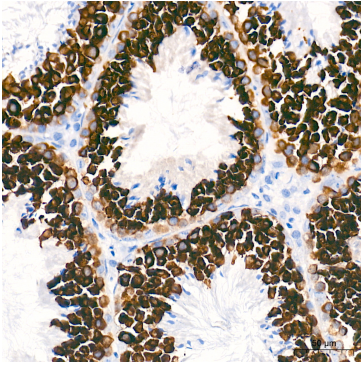


Confocal imaging of paraffin-embedded Rat testis tissue using BOULE/BOLL Rabbit mAb (A27663, dilution 1:200) followed by a further incubation with Cy3 Goat Anti-Rabbit IgG (H+L) (AS007, dilution 1:500) (Red). DAPI was used for nuclear staining (Blue). High pressure antigen retrieval performed with 0.01M Citrate Buffer (pH 6.0) prior to IF staining. Objective: 40x.

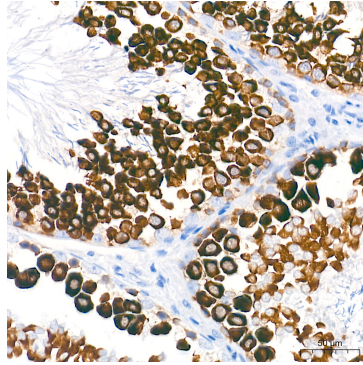


Immunohistochemistry analysis of paraffin-embedded Human testis tissue using BOULE/BOLL Rabbit mAb (A27663) at a dilution of 1:600 (40x lens). High pressure antigen retrieval performed with 0.01M Tris-EDTA Buffer (pH 9.0) prior to IHC staining.

Validation Data



Immunohistochemistry analysis of paraffin-embedded Mouse testis tissue using BOULE/BOLL Rabbit mAb (A27663) at a dilution of 1:600 (40x lens). High pressure antigen retrieval performed with 0.01M Tris-EDTA Buffer (pH 9.0) prior to IHC staining.



Immunohistochemistry analysis of paraffin-embedded Rat testis tissue using BOULE/BOLL Rabbit mAb (A27663) at a dilution of 1:600 (40x lens). High pressure antigen retrieval performed with 0.01M Tris-EDTA Buffer (pH 9.0) prior to IHC staining.