

ACAD8 Rabbit mAb

Catalog No.: A27665

Basic Information

Observed MW

38kDa/45kDa

Calculated MW

45kDa

Category

Primary antibody

Applications

WB,IHC-P,ELISA

Cross-Reactivity

Human, Mouse, Rat

CloneNo number

ARC73068

Background

This gene encodes a member of the acyl-CoA dehydrogenase family of enzymes that catalyze the dehydrogenation of acyl-CoA derivatives in the metabolism of fatty acids or branch chained amino acids. The encoded protein is a mitochondrial enzyme that functions in catabolism of the branched-chain amino acid valine. Defects in this gene are the cause of isobutyryl-CoA dehydrogenase deficiency.

Recommended Dilutions

WB 1:15000 - 1:90000

IHC-P 1:2000 - 1:8000

ELISA Recommended starting concentration is 1 µg/mL. Please optimize the concentration based on your specific assay requirements.

Immunogen Information

Gene ID

27034

Swiss Prot

Q9UKU7

Immunogen

Recombinant protein (or fragment). This information is considered to be commercially sensitive.

Synonyms

IBDH; ARC42; ACAD-8

Contact

☎ | 400-999-6126

✉ | cn.market@abclonal.com.cn

🌐 | www.abclonal.com.cn

Product Information

Source

Rabbit

Isotype

IgG

Purification

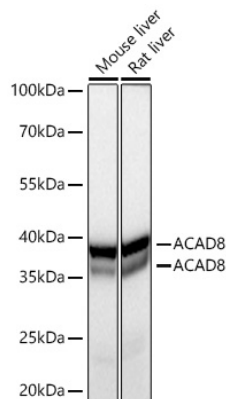
Affinity purification

Storage

Store at -20°C. Avoid freeze / thaw cycles.

Buffer: PBS with 0.09% Sodium azide, 0.05% BSA, 50% glycerol, pH7.3.

Validation Data



Western blot analysis of various lysates using ACAD8 Rabbit mAb (A27665) at 1:15000 dilution incubated overnight at 4°C.

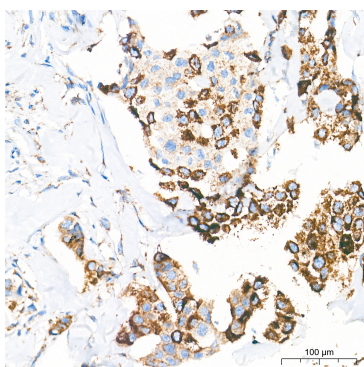
Secondary antibody: HRP-conjugated Goat anti-Rabbit IgG (H+L) (AS014) at 1:10000 dilution.

Lysates/proteins: 25 µg per lane.

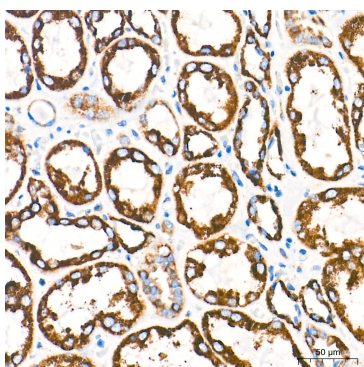
Blocking buffer: 3% nonfat dry milk in TBST.

Detection: ECL Basic Kit (RM00020).

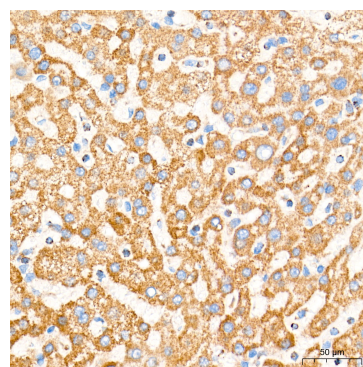
Exposure time: 10s.



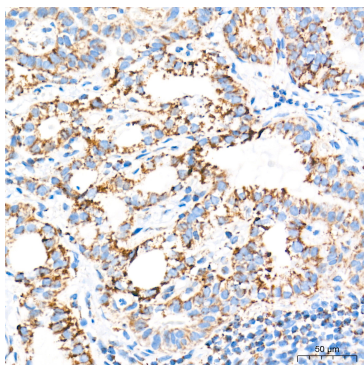
Immunohistochemistry analysis of paraffin-embedded Human breast cancer tissue using ACAD8 Rabbit mAb (A27665) at a dilution of 1:8000 (40x lens). High pressure antigen retrieval performed with 0.01M Tris-EDTA Buffer (pH 9.0) prior to IHC staining.



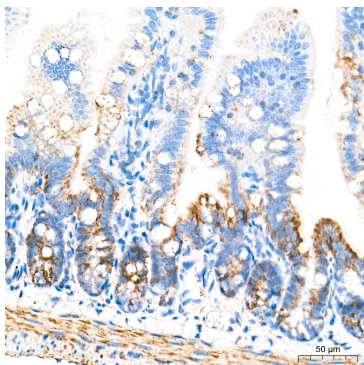
Immunohistochemistry analysis of paraffin-embedded Human kidney tissue using ACAD8 Rabbit mAb (A27665) at a dilution of 1:8000 (40x lens). High pressure antigen retrieval performed with 0.01M Tris-EDTA Buffer (pH 9.0) prior to IHC staining.



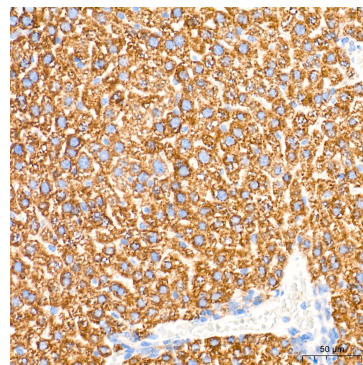
Immunohistochemistry analysis of paraffin-embedded Human liver tissue using ACAD8 Rabbit mAb (A27665) at a dilution of 1:8000 (40x lens). High pressure antigen retrieval performed with 0.01M Tris-EDTA Buffer (pH 9.0) prior to IHC staining.



Immunohistochemistry analysis of paraffin-embedded Human thyroid cancer tissue using ACAD8 Rabbit mAb (A27665) at a dilution of 1:8000 (40x lens). High pressure antigen retrieval performed with 0.01M Tris-EDTA Buffer (pH 9.0) prior to IHC staining.

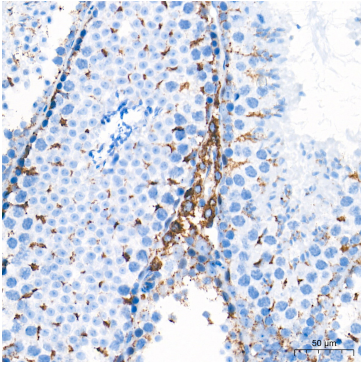


Immunohistochemistry analysis of paraffin-embedded Mouse intestin tissue using ACAD8 Rabbit mAb (A27665) at a dilution of 1:8000 (40x lens). High pressure antigen retrieval performed with 0.01M Tris-EDTA Buffer (pH 9.0) prior to IHC staining.

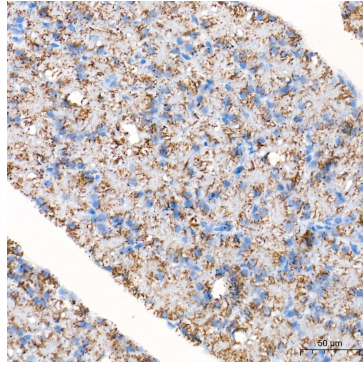


Immunohistochemistry analysis of paraffin-embedded Mouse liver tissue using ACAD8 Rabbit mAb (A27665) at a dilution of 1:8000 (40x lens). High pressure antigen retrieval performed with 0.01M Tris-EDTA Buffer (pH 9.0) prior to IHC staining.

Validation Data



Immunohistochemistry analysis of paraffin-embedded Mouse testis tissue using ACAD8 Rabbit mAb (A27665) at a dilution of 1:8000 (40x lens). High pressure antigen retrieval performed with 0.01M Tris-EDTA Buffer (pH 9.0) prior to IHC staining.



Immunohistochemistry analysis of paraffin-embedded Rat pancreas tissue using ACAD8 Rabbit mAb (A27665) at a dilution of 1:8000 (40x lens). High pressure antigen retrieval performed with 0.01M Tris-EDTA Buffer (pH 9.0) prior to IHC staining.