

ABflo® 594 Rabbit anti-Human CD197/CCR7 mAb

Catalog No.: A27683

Basic Information

Observed MW

Calculated MW

43kDa

Category

Primary antibody

Applications

FC

Cross-Reactivity

Human

CloneNo number

ARC64945

Conjugate

ABflo® 594. Ex:588nm. Em:604nm.

Recommended Dilutions

FC 5 µl per 10⁶ cells in
100 µl volume

Background

The protein encoded by this gene is a member of the G protein-coupled receptor family. This receptor was identified as a gene induced by the Epstein-Barr virus (EBV), and is thought to be a mediator of EBV effects on B lymphocytes. This receptor is expressed in various lymphoid tissues and activates B and T lymphocytes. It has been shown to control the migration of memory T cells to inflamed tissues, as well as stimulate dendritic cell maturation. The chemokine (C-C motif) ligand 19 (CCL19/ECL) has been reported to be a specific ligand of this receptor. Signals mediated by this receptor regulate T cell homeostasis in lymph nodes, and may also function in the activation and polarization of T cells, and in chronic inflammation pathogenesis. Alternative splicing of this gene results in multiple transcript variants.

Immunogen Information

Gene ID

1236

Swiss Prot

P32248

Immunogen

Recombinant protein (or fragment). This information is considered to be commercially sensitive.

Synonyms

BLR2; EB1; CCR-7; CD197; CDw197; CMKBR7; CC-CCR-7

Contact

☎ | 400-999-6126

✉ | cn.market@abclonal.com.cn

🌐 | www.abclonal.com.cn

Product Information

Source

Rabbit

Isotype

IgG

Purification

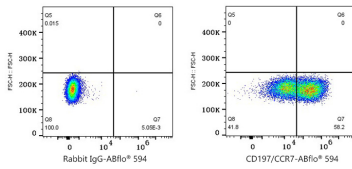
Affinity purification

Storage

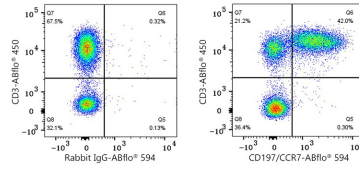
Store at 2-8°C. Avoid freeze.

Buffer: PBS containing 0.2% BSA, preserved with proclin300 or sodium azide (as specified on the Certificate of Analysis), pH 7.3.

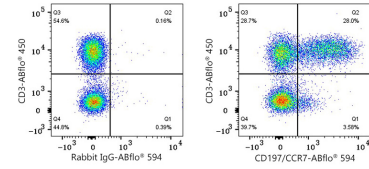
Validation Data



Flow cytometry: 1×10^6 293T (Transfection) cells were surface-stained with ABflo® 594 Rabbit IgG isotype control (A23821,5 $\mu\text{l}/\text{Test}$,left) or ABflo® 594 Rabbit anti-Human CD197/CCR7 mAb (A27683,5 $\mu\text{l}/\text{Test}$,right).



Flow cytometry: 1×10^6 Cynomolgus peripheral blood mononuclear cells were surface-stained with ABflo® 450 Rabbit anti-Human/Monkey CD3 mAb (A27177,5 $\mu\text{l}/\text{Test}$) and ABflo® 594 Rabbit IgG isotype control (A23821,5 $\mu\text{l}/\text{Test}$,left) or ABflo® 594 Rabbit anti-Human/Monkey CD197/CCR7 mAb (A27683,5 $\mu\text{l}/\text{Test}$,right). Cells in the lymphocyte gate were used for analysis.



Flow cytometry: 1×10^6 Human PBMC were surface-stained with ABflo® 450 Rabbit anti-Human/Monkey CD3 mAb (A27177,5 $\mu\text{l}/\text{Test}$) and ABflo® 594 Rabbit IgG isotype control (A23821,5 $\mu\text{l}/\text{Test}$,left) or ABflo® 594 Rabbit anti-Human/Monkey CD197/CCR7 mAb (A27683,5 $\mu\text{l}/\text{Test}$,right). Cells in the lymphocyte gate were used for analysis.