

ABflo® 488 Rabbit anti-Human/Mouse/Monkey FOXP3 mAb

Catalog No.: A27684

Basic Information

Observed MW

Calculated MW

47kDa

Category

Primary antibody

Applications

FC (intra)

Cross-Reactivity

Human, Mouse, Cynomolgus

CloneNo number

ARC74142

Conjugate

ABflo® 488. Ex:491nm. Em:516nm.

Recommended Dilutions

FC (intra) 5 µl per 10⁶ cells in
 100 µl volume

Background

The protein encoded by this gene is a member of the forkhead/winged-helix family of transcriptional regulators. Defects in this gene are the cause of immunodeficiency polyendocrinopathy, enteropathy, X-linked syndrome (IPEX), also known as X-linked autoimmunity-immunodeficiency syndrome. Alternatively spliced transcript variants encoding different isoforms have been identified.

Immunogen Information

Gene ID

50943

Swiss Prot

Q9BZS1

Immunogen

Synthetic peptide. This information is considered to be commercially sensitive.

Synonyms

JM2; AIID; IPEX; PIDX; XPID; DIETER

Contact

 | 400-999-6126

 | cn.market@abclonal.com.cn

 | www.abclonal.com.cn

Product Information

Source

Rabbit

Isotype

IgG

Purification

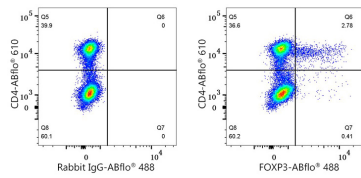
Affinity purification

Storage

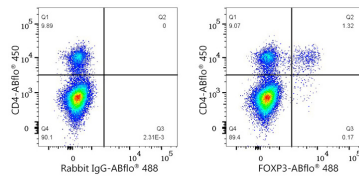
Store at 2-8°C. Avoid freeze.

Buffer: PBS with 0.09% Sodium azide, 0.2% BSA, pH7.3.

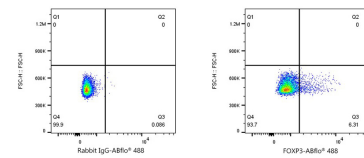
Validation Data



Flow cytometry: 1×10^6 Human PBMC were surface-stained with ABflo® 610 Rabbit anti-Human/Monkey CD4 mAb (A26218, 5 μ l/Test) , and then intracellularly-stained with ABflo® 488 Rabbit IgG isotype control (A22069, 5 μ l/Test, left) or ABflo® 488 Rabbit anti-Human/Mouse FOXP3 mAb (A27684, 5 μ l/Test, right). Cells in the lymphocyte gate were used for analysis.



Flow cytometry: 1×10^6 C57BL/6 mouse splenocytes were surface-stained with ABflo® 450 Rabbit anti-Mouse CD4 mAb (A25941, 5 μ l/Test) , and then intracellularly-stained ABflo® 488 Rabbit IgG isotype control (A22069, 5 μ l/Test, left) or ABflo® 488 Rabbit anti-Human/Mouse FOXP3 mAb (A27684, 5 μ l/Test, right). Cells in the lymphocyte gate were used for analysis.



Flow cytometry: 1×10^6 Cynomolgus PBMC were intracellularly-stained with ABflo® 488 Rabbit IgG isotype control (A22069, 5 μ l/Test, left) or ABflo® 488 Rabbit anti-Human/Mouse/Monkey FOXP3 mAb (A27684, 5 μ l/Test, right). Cells in the CD3+CD4+ T cell gate were used for analysis.