

ATP8 Rabbit mAb

Catalog No.: A27711 **Recombinant**

Basic Information

Observed MW

10kDa/8kDa

Calculated MW

8kDa

Category

Primary antibody

Applications

WB,IP,IHC-P,ELISA

Cross-Reactivity

Human, Rat

CloneNo number

ARC72932

Background

Contributes to proton-transporting ATP synthase activity, rotational mechanism. Involved in mitochondrial ATP synthesis coupled proton transport. Part of mitochondrial proton-transporting ATP synthase complex. Implicated in multiple sclerosis and urinary bladder cancer.

Recommended Dilutions

WB 1:6000 - 1:24000

IP 0.5µg-4µg antibody for
200µg-400µg extracts of
whole cells

IHC-P 1:500 - 1:2000

ELISA Recommended starting
concentration is 1 µg/mL.
Please optimize the
concentration based on
your specific assay
requirements.

Contact

☎ | 400-999-6126

✉ | cn.market@abclonal.com.cn

🌐 | www.abclonal.com.cn

Immunogen Information

Gene ID

4509

Swiss Prot

P03928

Immunogen

Synthetic peptide. This information is considered to be commercially sensitive.

Synonyms

ATPase8; MTATP8; ATP8

Product Information

Source

Rabbit

Isotype

IgG

Purification

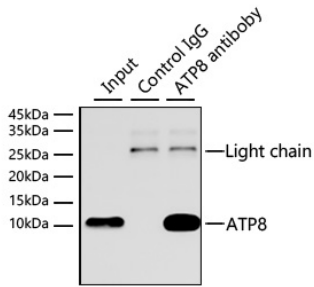
Affinity purification

Storage

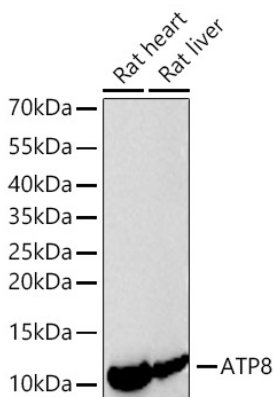
Store at -20°C. Avoid freeze / thaw cycles.

Buffer: PBS with 0.09% Sodium azide,0.05% BSA,50% glycerol,pH7.3.

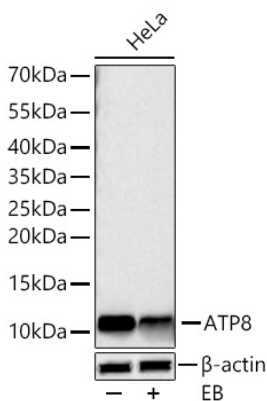
Validation Data



Immunoprecipitation of ATP8 from 300 μ g extracts of Hep G2 cells was performed using 2 μ g of ATP8 Rabbit mAb (A27711). Rabbit IgG isotype control (AC005) was used to precipitate the Control IgG sample. IP samples were eluted with 1X reducing Laemmli Buffer. The Input lane represents 10% of the total input. Western blot analysis of immunoprecipitates was conducted using ATP8 Rabbit mAb (A27711) at a dilution of IB 1:3000.

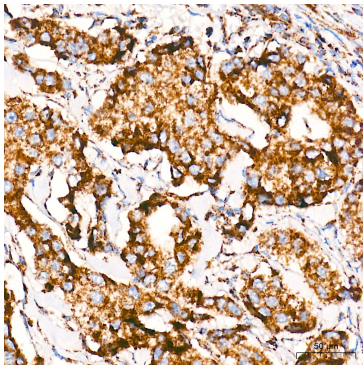


Western blot analysis of various lysates using ATP8 Rabbit mAb (A27711) at 1:12000 dilution incubated at room temperature for 1.5 hours.
 Secondary antibody: HRP-conjugated Goat anti-Rabbit IgG (H+L) (AS014) at 1:10000 dilution.
 Lysates/proteins: 25 μ g per lane.
 Blocking buffer: 3% nonfat dry milk in TBST.
 Detection: ECL Basic Kit (RM00020).
 Exposure time: 45s.

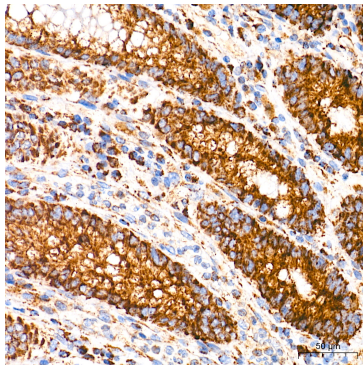


Western blot analysis of lysates from HeLa cells using ATP8 Rabbit mAb (A27711) at 1:12000 dilution incubated at room temperature for 1.5 hours. HeLa cells were treated by EB (100 ng/mL) at 37°C for 3 hours after.
 Secondary antibody: HRP-conjugated Goat anti-Rabbit IgG (H+L) (AS014) at 1:10000 dilution.
 Lysates/proteins: 30 μ g per lane.
 Blocking buffer: 3% nonfat dry milk in TBST.
 Detection: ECL Basic Kit (RM00020).
 Exposure time: 45s.

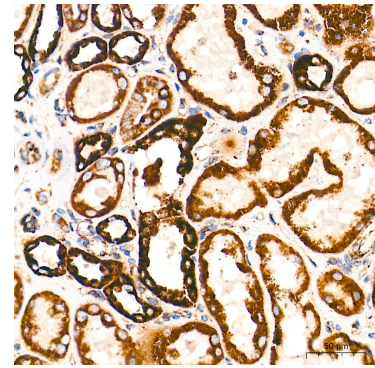
Validation Data



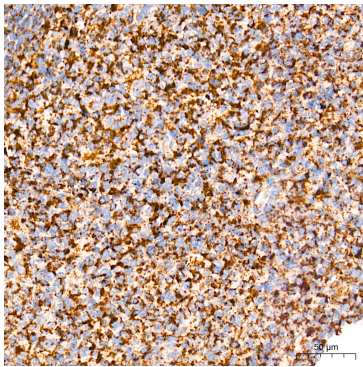
Immunohistochemistry analysis of paraffin-embedded Human breast cancer tissue using ATP8 Rabbit mAb (A27711) at a dilution of 1:500 (40x lens). High pressure antigen retrieval performed with 0.01M Tris-EDTA Buffer (pH 9.0) prior to IHC staining.



Immunohistochemistry analysis of paraffin-embedded Human colon tissue using ATP8 Rabbit mAb (A27711) at a dilution of 1:500 (40x lens). High pressure antigen retrieval performed with 0.01M Tris-EDTA Buffer (pH 9.0) prior to IHC staining.



Immunohistochemistry analysis of paraffin-embedded Human kidney tissue using ATP8 Rabbit mAb (A27711) at a dilution of 1:500 (40x lens). High pressure antigen retrieval performed with 0.01M Tris-EDTA Buffer (pH 9.0) prior to IHC staining.



Immunohistochemistry analysis of paraffin-embedded Human tonsil tissue using ATP8 Rabbit mAb (A27711) at a dilution of 1:500 (40x lens). High pressure antigen retrieval performed with 0.01M Tris-EDTA Buffer (pH 9.0) prior to IHC staining.