

# RIP3 Rabbit mAb

Catalog No.: A27719 **Recombinant**

## Basic Information

**Observed MW**

42-56kDa

**Calculated MW**

63kDa

**Category**

Primary antibody

**Applications**

WB, IF/ICC, ELISA

**Cross-Reactivity**

Mouse

**CloneNo number**

ARC75329

## Background

Enables NF-kappaB-inducing kinase activity and protein serine/threonine kinase activity. Involved in several processes, including execution phase of necroptosis; hematopoietic or lymphoid organ development; and regulation of programmed cell death. Acts upstream of or within several processes, including I-kappaB kinase/NF-kappaB signaling; positive regulation of intrinsic apoptotic signaling pathway; and positive regulation of protein deacetylation. Located in cytoplasm and nucleus. Is expressed in several structures, including alimentary system; hemolymphoid system gland; male reproductive gland or organ; primitive streak; and turbinate bone primordium. Orthologous to human RIPK3 (receptor interacting serine/threonine kinase 3).

## Recommended Dilutions

**WB** 1:6000 - 1:28000**IF/ICC** 1:100 - 1:200

**ELISA** Recommended starting concentration is 1 µg/mL. Please optimize the concentration based on your specific assay requirements.

## Immunogen Information

**Gene ID**

56532

**Swiss Prot**

Q9QZL0

**Immunogen**

Synthetic peptide. This information is considered to be commercially sensitive.

**Synonyms**

Rip3; 2610528K09Rik

## Contact

 | 400-999-6126 | [cn.market@abclonal.com.cn](mailto:cn.market@abclonal.com.cn) | [www.abclonal.com.cn](http://www.abclonal.com.cn)

## Product Information

**Source**

Rabbit

**Isotype**

IgG

**Purification**

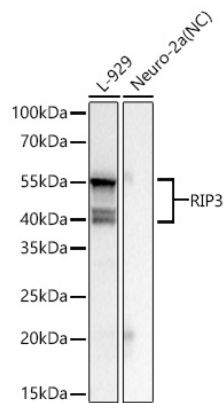
Affinity purification

**Storage**

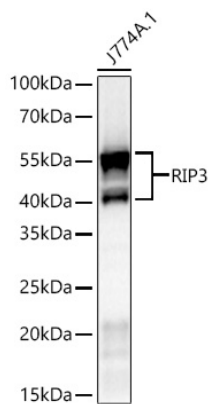
Store at -20°C. Avoid freeze / thaw cycles.

Buffer: PBS with 0.09% Sodium azide, 0.05% BSA, 50% glycerol, pH7.3.

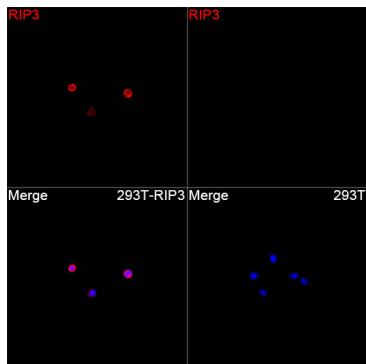
Validation Data



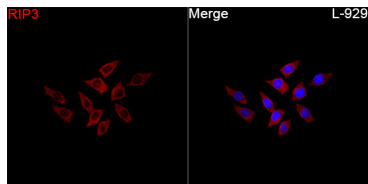
Western blot analysis of various lysates using RIP3 Rabbit mAb (A27719) at 1:7000 dilution incubated overnight at 4°C.  
Secondary antibody: HRP-conjugated Goat anti-Rabbit IgG (H+L) (AS014) at 1:10000 dilution.  
Lysates/proteins: 25 µg per lane.  
Blocking buffer: 3% nonfat dry milk in TBST.  
Detection: ECL Basic Kit (RM00020).  
Negative control (NC): Neuro-2a  
Exposure time: 1s.



Western blot analysis of lysates from J774A.1 cells using RIP3 Rabbit mAb (A27719) at 1:7000 dilution incubated overnight at 4°C.  
Secondary antibody: HRP-conjugated Goat anti-Rabbit IgG (H+L) (AS014) at 1:10000 dilution.  
Lysates/proteins: 25 µg per lane.  
Blocking buffer: 3% nonfat dry milk in TBST.  
Detection: ECL Basic Kit (RM00020).  
Exposure time: 45s.



Immunofluorescence analysis of 293T cells transfected with RIP3 using RIP3 Rabbit mAb (A27719) at a dilution of 1:200 (40x lens).  
Secondary antibody: Cy3-conjugated Goat anti-Rabbit IgG (H+L)(AS007) at 1:500 dilution. Blue: DAPI for nuclear staining.



Immunofluorescence analysis of L-929 cells using RIP3 Rabbit mAb (A27719) at a dilution of 1:200 (40x lens). Secondary antibody: Cy3-conjugated Goat anti-Rabbit IgG (H+L)(AS007) at 1:500 dilution. Blue: DAPI for nuclear staining.