

NME3 Rabbit pAb

Catalog No.: A2774

Basic Information

Observed MW

19kDa

Calculated MW

19kDa

Category

Primary antibody

Applications

ELISA, WB, IHC-P

Cross-Reactivity

Human, Mouse, Rat

Background

Predicted to enable nucleoside diphosphate kinase activity. Predicted to be involved in apoptotic process and nucleotide metabolic process. Predicted to be located in cytosol.

Recommended Dilutions

WB 1:500 - 1:2000

IHC-P 1:50 - 1:100

Immunogen Information

Gene ID

4832

Swiss Prot

Q13232

Immunogen

Recombinant fusion protein containing a sequence corresponding to amino acids 20-169 of human NME3 (NP_002504.2).

Synonyms

NDPKC; NDPK-C; NM23H3; DR-nm23; NM23-H3; c371H6.2; NME3

Contact

☎ | 400-999-6126

✉ | cn.market@abclonal.com.cn

🌐 | www.abclonal.com.cn

Product Information

Source

Rabbit

Isotype

IgG

Purification

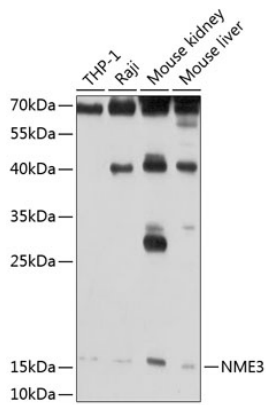
Affinity purification

Storage

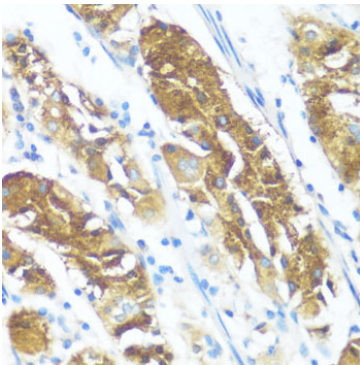
Store at -20°C. Avoid freeze / thaw cycles.

Buffer: PBS with 0.02% sodium azide, 50% glycerol, pH 7.3.

Validation Data



Western blot analysis of various lysates using NME3 Rabbit pAb (A2774) at 1:1000 dilution.
Secondary antibody: HRP Goat Anti-Rabbit IgG (H+L) (AS014) at 1:10000 dilution.
Lysates/proteins: 25µg per lane.
Blocking buffer: 3% nonfat dry milk in TBST.
Detection: ECL Basic Kit (RM00020).
Exposure time: 30s.



Immunohistochemistry analysis of paraffin-embedded human stomach using NME3 Rabbit pAb (A2774) at dilution of 1:100 (40x lens). Perform microwave antigen retrieval with 10 mM PBS buffer pH 7.2 before commencing with IHC staining protocol.