

ABflo® 450 Rabbit anti-Human CD9 mAb

Catalog No.: A27753

Basic Information

Observed MW

Calculated MW

25kDa

Category

Primary antibody

Applications

FC

Cross-Reactivity

Human

CloneNo number

ARC65639

Conjugate

ABflo® 450. Ex:406nm. Em:445nm.

Background

This gene encodes a member of the transmembrane 4 superfamily, also known as the tetraspanin family. Tetraspanins are cell surface glycoproteins with four transmembrane domains that form multimeric complexes with other cell surface proteins. The encoded protein functions in many cellular processes including differentiation, adhesion, and signal transduction, and expression of this gene plays a critical role in the suppression of cancer cell motility and metastasis.

Recommended Dilutions

FC 5 µl per 10⁶ cells in
100 µl volume

Immunogen Information

Gene ID

928

Swiss Prot

P21926

Immunogen

Recombinant protein (or fragment). This information is considered to be commercially sensitive.

Synonyms

MIC3; MRP-1; BTCC-1; DRAP-27; TSPAN29; TSPAN-29

Contact

☎ | 400-999-6126

✉ | cn.market@abclonal.com.cn

🌐 | www.abclonal.com.cn

Product Information

Source

Rabbit

Isotype

IgG

Purification

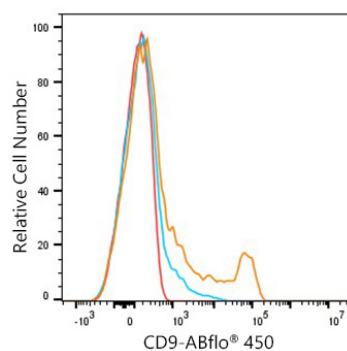
Affinity purification

Storage

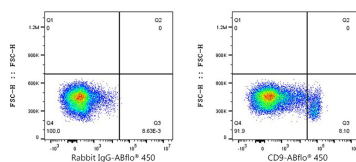
Store at 2-8°C. Avoid freeze.

Buffer: PBS with 0.09% Sodium azide, 0.2% BSA, pH7.3.

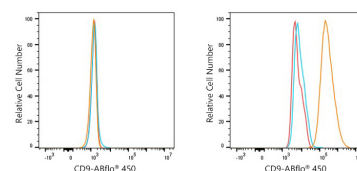
Validation Data



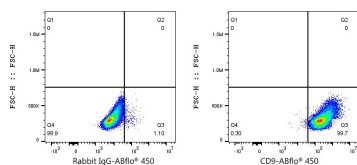
Flow cytometry: 1×10^6 Human PBMC were surface-stained with ABflo® 450 Rabbit anti-Human CD9 mAb (A27753, 5 μ l/Test, orange line) or ABflo® 450 Rabbit IgG isotype control (A27451, 5 μ l/Test, blue line). Non-fluorescently stained cells were used as blank control (red line). Cells in the monocyte gate were used for analysis.



Flow cytometry: 1×10^6 Human PBMC were surface-stained with ABflo® 450 Rabbit IgG isotype control (A27451, 5 μ l/Test, left) or ABflo® 450 Rabbit anti-Human CD9 mAb (A27753, 5 μ l/Test, right). Cells in the monocyte gate were used for analysis.



Flow cytometry: 1×10^6 CHO cells (negative control, left) and CHO cells (Transfection, right) were surface-stained with ABflo® 450 Rabbit anti-Human CD9 mAb (A27753, 5 μ l/Test, orange line) or ABflo® 450 Rabbit IgG isotype control (A27451, 5 μ l/Test, blue line). Non-fluorescently stained cells were used as blank control (red line).



Flow cytometry: 1×10^6 CHO cells (Transfection, right) were surface-stained with ABflo® 450 Rabbit IgG isotype control (A27451, 5 μ l/Test, left) or ABflo® 450 Rabbit anti-Human CD9 mAb (A27753, 5 μ l/Test, right).