

Magnetic Beads-conjugated Rabbit anti-Mouse TMEM192 mAb MJFF-G-20H2

Catalog No.: A27785

Basic Information

Observed MW

31 kDa

Calculated MW

30 kDa

Category

Primary antibody

Applications

IP

Cross-Reactivity

Mouse

CloneNo number

ARC5177-Magnetic Beads

Conjugate

Magnetic Beads

Recommended Dilutions

IP 0.5 µg - 4 µg antibody for
400µg-600µg extracts of
whole cells

Background

Predicted to enable protein homodimerization activity. Located in lysosome. Orthologous to human TMEM192 (transmembrane protein 192).

Immunogen Information

Gene ID

73067

Swiss Prot

Q9CXT7

Immunogen

Synthetic peptide. This information is considered to be commercially sensitive.

Synonyms

3110005G23Rik

Contact

 | 400-999-6126

 | cn.market@abclonal.com.cn

 | www.abclonal.com.cn

Product Information

Source

Rabbit

Isotype

IgG

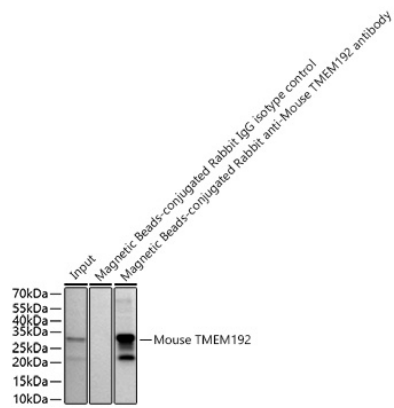
Purification

Affinity purification

Storage

Store at 2-8°C. Avoid freeze / thaw cycles.
Buffer: PBS with 0.09% Sodium azide,pH7.3.

Validation Data



Immunoprecipitation of Mouse TMEM192 from 600 μ g extracts of Mouse kidney was performed using 1 μ g of Magnetic Beads-conjugated Rabbit anti-Mouse TMEM192 mAb MJFF-G-20H2 (A27785). Magnetic Beads-conjugated Rabbit IgG isotype control (AC047) was used to precipitate the Control IgG sample. IP samples were eluted with 1x Laemmli Buffer. The Input lane represents 10% of the total input. Western blot analysis of immunoprecipitates was conducted using TMEM192 Rabbit mAb (A21165) at a dilution of 1:1000.