

# [KO Validated] Abhd6 Rabbit mAb

Catalog No.: A27794 **KO** **Validated** **Recombinant**

## Basic Information

### Observed MW

38kDa

### Calculated MW

38kDa

### Category

Primary antibody

### Applications

WB,IF/ICC,IHC-P,ELISA

### Cross-Reactivity

Human, Mouse, Rat

### CloneNo number

ARC74848

## Background

Enables monoacylglycerol lipase activity. Involved in acylglycerol catabolic process. Predicted to be located in late endosome membrane and lysosomal membrane. Predicted to be part of AMPA glutamate receptor complex. Predicted to be active in GABA-ergic synapse; glutamatergic synapse; and postsynaptic membrane.

## Recommended Dilutions

<b>WB</b>	1:6000 - 1:24000
<b>IF/ICC</b>	1:100 - 1:400
<b>IHC-P</b>	1:100 - 1:400
<b>ELISA</b>	Recommended starting concentration is 1 µg/mL. Please optimize the concentration based on your specific assay requirements.

## Immunogen Information

### Gene ID

66082

### Swiss Prot

Q8R2Y0

### Immunogen

Recombinant protein (or fragment). This information is considered to be commercially sensitive.

### Synonyms

AA673485; AV065425; 0610041D24Rik; ABHD6

## Contact

☎	400-999-6126
✉	cn.market@abclonal.com.cn
🌐	www.abclonal.com.cn

## Product Information

### Source

Rabbit

### Isotype

IgG

### Purification

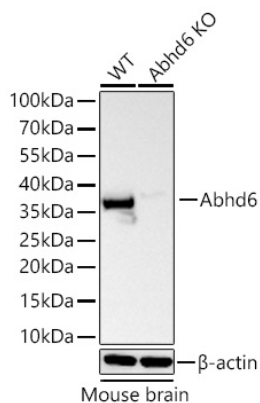
Affinity purification

### Storage

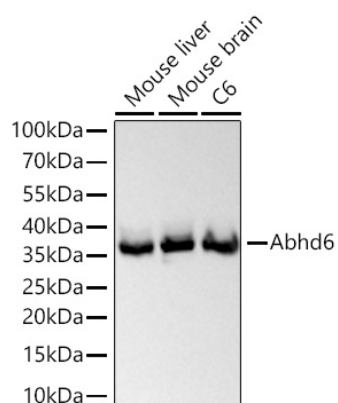
Store at -20°C. Avoid freeze / thaw cycles.

Buffer: PBS with 0.09% Sodium azide, 0.05% BSA, 50% glycerol, pH7.3.

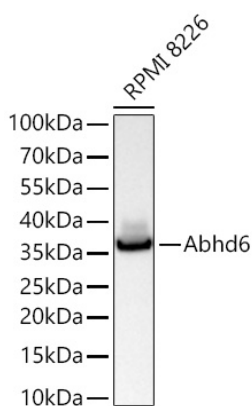
## Validation Data



Western blot analysis of lysates from wild type (WT) and Abhd6 knockout (KO) Mouse brain using [KO Validated] Abhd6 Rabbit mAb (A27794) at 1:6000 dilution incubated overnight at 4°C.  
 Secondary antibody: HRP-conjugated Goat anti-Rabbit IgG (H+L) (AS014) at 1:10000 dilution.  
 Lysates/proteins: 25 µg per lane.  
 Blocking buffer: 3% nonfat dry milk in TBST.  
 Detection: ECL Basic Kit (RM00020).  
 Exposure time: 20s.

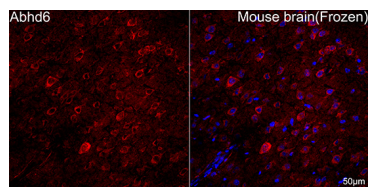


Western blot analysis of various lysates using [KO Validated] Abhd6 Rabbit mAb (A27794) at 1:6000 dilution incubated overnight at 4°C.  
 Secondary antibody: HRP-conjugated Goat anti-Rabbit IgG (H+L) (AS014) at 1:10000 dilution.  
 Lysates/proteins: 25 µg per lane.  
 Blocking buffer: 3% nonfat dry milk in TBST.  
 Detection: ECL Basic Kit (RM00020).  
 Exposure time: 20s.

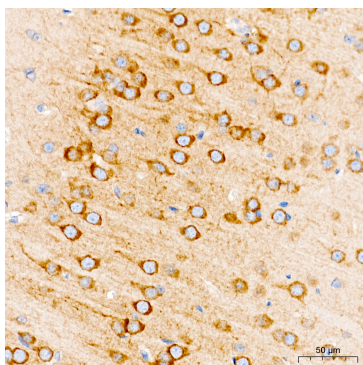


Western blot analysis of lysates from RPMI 8226 cells using [KO Validated] Abhd6 Rabbit mAb (A27794) at 1:6000 dilution incubated overnight at 4°C.  
 Secondary antibody: HRP-conjugated Goat anti-Rabbit IgG (H+L) (AS014) at 1:10000 dilution.  
 Lysates/proteins: 25 µg per lane.  
 Blocking buffer: 3% nonfat dry milk in TBST.  
 Detection: ECL Basic Kit (RM00020).  
 Exposure time: 60s.

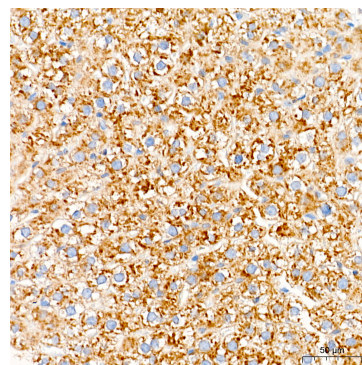
## Validation Data



Confocal imaging of frozen sections Mouse brain tissue using [KO Validated] Abhd6 Rabbit mAb (A27794, dilution 1:200) followed by a further incubation with Cy3 Goat Anti-Rabbit IgG (H+L) (AS007, dilution 1:500) (Red). DAPI was used for nuclear staining (Blue). Microwave antigen retrieval performed with 0.01M Citrate Buffer (pH 6.0) prior to IF staining. Objective: 40x.



Immunohistochemistry analysis of paraffin-embedded Rat brain tissue using [KO Validated] Abhd6 Rabbit mAb (A27794) at a dilution of 1:200 (40x lens). High pressure antigen retrieval performed with 0.01M Tris-EDTA Buffer (pH 9.0) prior to IHC staining.



Immunohistochemistry analysis of paraffin-embedded Rat liver tissue using [KO Validated] Abhd6 Rabbit mAb (A27794) at a dilution of 1:200 (40x lens). High pressure antigen retrieval performed with 0.01M Tris-EDTA Buffer (pH 9.0) prior to IHC staining.