

# TOM20 Mouse mAb

Catalog No.: A27799

## Basic Information

### Observed MW

16kDa

### Calculated MW

16kDa

### Category

Primary antibody

### Applications

WB,IP,IF/ICC,IF-P,IHC-P,ELISA

### Cross-Reactivity

Human, Mouse, Rat

### CloneNo number

AMC50087

## Background

Enables protein-transporting ATPase activity and unfolded protein binding activity. Involved in protein targeting to mitochondrion. Located in mitochondria-associated endoplasmic reticulum membrane and mitochondrial outer membrane.

## Recommended Dilutions

**WB** 1:5000 - 1:10000

**IP** 0.5µg-4µg antibody for  
100µg-300µg extracts of  
whole cells

**IF/ICC** 1:200 - 1:1000

**IF-P** 1:200 - 1:1000

**IHC-P** 1:5000 - 1:20000

**ELISA** Recommended starting  
concentration is 1 µg/mL.  
Please optimize the  
concentration based on  
your specific assay  
requirements.

## Immunogen Information

### Gene ID

9804

### Swiss Prot

Q15388

### Immunogen

Recombinant protein (or fragment). This information is considered to be commercially sensitive.

### Synonyms

MAS20; MOM19; TOM20

## Product Information

### Source

Mouse

### Isotype

IgG

### Purification

Affinity purification

### Storage

Store at -20°C. Avoid freeze / thaw cycles.

Buffer: PBS with 0.09% Sodium azide, 50% glycerol, pH7.3.

Contact

---

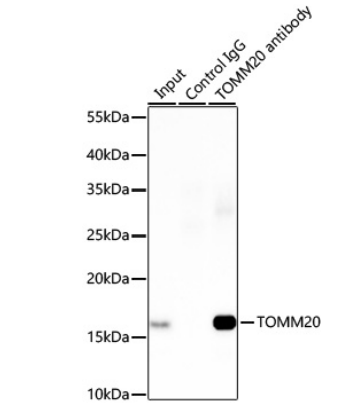
☎ | 400-999-6126

✉ | [cn.market@abclonal.com.cn](mailto:cn.market@abclonal.com.cn)

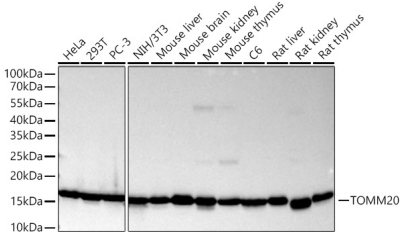
🌐 | [www.abclonal.com.cn](http://www.abclonal.com.cn)

---

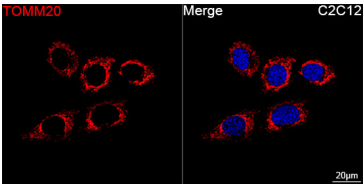
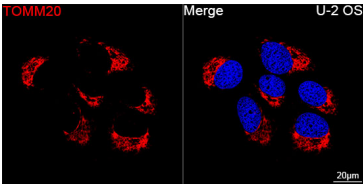
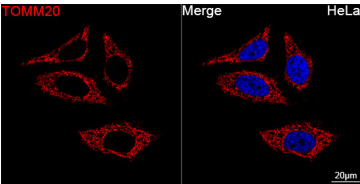
Validation Data



Immunoprecipitation of TOMM20 from 150 µg extracts of HeLa cells was performed using 1 µg of TOMM20 Mouse mAb (A27798). Mouse IgG isotype control (AC011) was used to precipitate the Control IgG sample. IP samples were eluted with 1X reducing Laemmli Buffer. The Input lane represents 10% of the total input. Western blot analysis of immunoprecipitates was conducted using TOM20 Rabbit mAb(A19403) at a dilution of 1:10000.



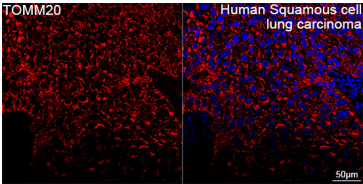
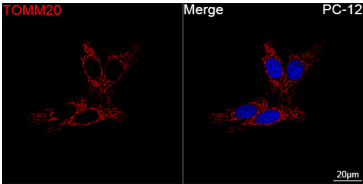
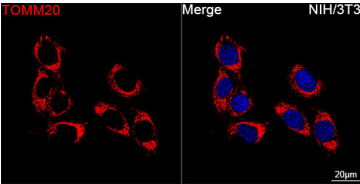
Western blot analysis of various lysates using TOMM20 Mouse mAb (A27799) at 1:6000 dilution incubated overnight at 4°C. Secondary antibody: HRP-conjugated Goat anti-Mouse IgG (H+L) (AS003) at 1:10000 dilution. Lysates/proteins: 25 µg per lane. Blocking buffer: 3% nonfat dry milk in TBST. Detection: ECL Basic Kit (RM00020). Exposure time: 45s.



Confocal imaging of HeLa cells using TOMM20 Mouse mAb (A27799, dilution 1:200) followed by a further incubation with Cy3-conjugated Goat anti-Mouse IgG (H+L) (AS008, dilution 1:500) (Red). DAPI was used for nuclear staining (Blue). Objective: 100x.

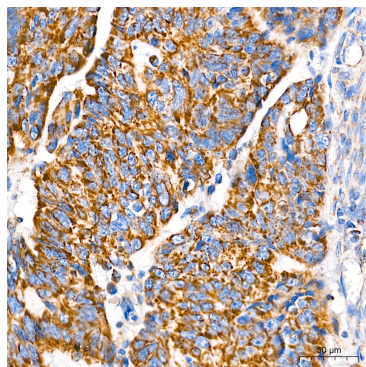
Confocal imaging of U-2 OS cells using TOMM20 Mouse mAb (A27799, dilution 1:200) followed by a further incubation with Cy3-conjugated Goat anti-Mouse IgG (H+L) (AS008, dilution 1:500) (Red). DAPI was used for nuclear staining (Blue). Objective: 100x.

Confocal imaging of C2C12 cells using TOMM20 Mouse mAb (A27799, dilution 1:200) followed by a further incubation with Cy3-conjugated Goat anti-Mouse IgG (H+L) (AS008, dilution 1:500) (Red). DAPI was used for nuclear staining (Blue). Objective: 100x.

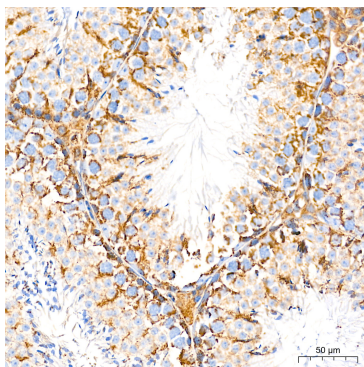


## Validation Data

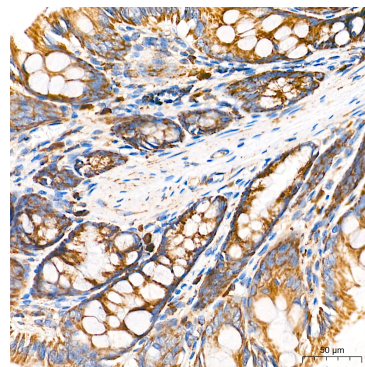
Confocal imaging of NIH/3T3 cells using TOMM20 Mouse mAb (A27799, dilution 1:200) followed by a further incubation with Cy3-conjugated Goat anti-Mouse IgG (H+L) (AS008, dilution 1:500) (Red). DAPI was used for nuclear staining (Blue). Objective: 100x.



Confocal imaging of PC-12 cells using TOMM20 Mouse mAb (A27799, dilution 1:200) followed by a further incubation with Cy3-conjugated Goat anti-Mouse IgG (H+L) (AS008, dilution 1:500) (Red). DAPI was used for nuclear staining (Blue). Objective: 100x.



Confocal imaging of paraffin-embedded Human Squamous cell lung carcinoma tissue using TOMM20 Mouse mAb (A27799, dilution 1:200) followed by a further incubation with Cy3-conjugated Goat anti-Mouse IgG (H+L) (AS008, dilution 1:500) (Red). DAPI was used for nuclear staining (Blue). High pressure antigen retrieval performed with 0.01M Citrate Buffer (pH 6.0) prior to IF staining. Objective: 40x.



Immunohistochemistry analysis of paraffin-embedded Human colon carcinoma tissue using TOMM20 Mouse mAb (A27799) at a dilution of 1:10000 (40x lens). High pressure antigen retrieval performed with 0.01M Tris-EDTA Buffer (pH 9.0) prior to IHC staining.

Immunohistochemistry analysis of paraffin-embedded Mouse testis tissue using TOMM20 Mouse mAb (A27799) at a dilution of 1:10000 (40x lens). High pressure antigen retrieval performed with 0.01M Tris-EDTA Buffer (pH 9.0) prior to IHC staining.

Immunohistochemistry analysis of paraffin-embedded Rat colon tissue using TOMM20 Mouse mAb (A27799) at a dilution of 1:10000 (40x lens). High pressure antigen retrieval performed with 0.01M Tris-EDTA Buffer (pH 9.0) prior to IHC staining.