

TOM20 Rat mAb

Catalog No.: A27800

Basic Information

Observed MW

16kDa

Calculated MW

16kDa

Category

Primary antibody

Applications

WB,IF/ICC,IF-P,IHC-P,ELISA

Cross-Reactivity

Human, Mouse, Rat

CloneNo number

ATC50007

Background

Enables protein-transporting ATPase activity and unfolded protein binding activity. Involved in protein targeting to mitochondrion. Located in mitochondria-associated endoplasmic reticulum membrane and mitochondrial outer membrane.


Recommended Dilutions

WB	1:5000 - 1:10000
IF/ICC	1:100 - 1:200
IF-P	1:100 - 1:200
IHC-P	1:500 - 1:2000
ELISA	Recommended starting concentration is 1 µg/mL. Please optimize the concentration based on your specific assay requirements.

Contact

 | 400-999-6126

 | cn.market@abclonal.com.cn

 | www.abclonal.com.cn

Immunogen Information

Gene ID

9804

Swiss Prot

Q15388

Immunogen

Recombinant protein (or fragment). This information is considered to be commercially sensitive.

Synonyms

MAS20; MOM19; TOM20

Product Information

Source

Rat

Isotype

IgG2a. Rabbit-derived rat chimeric antibody

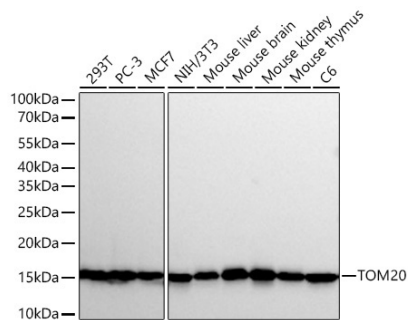
Purification

Affinity purification

Storage

Store at -20°C. Avoid freeze / thaw cycles.
Buffer: PBS with 0.09% Sodium azide, 50% glycerol, pH7.3.

Validation Data



Western blot analysis of various lysates using TOM20 Rat mAb (A27800) at 1:6000 dilution incubated overnight at 4°C.

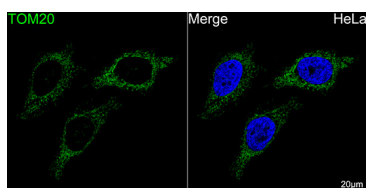
Secondary antibody: HRP-conjugated Goat anti-Rat IgG (H+L) (AS028) at 1:10000 dilution.

Lysates/proteins: 25 µg per lane.

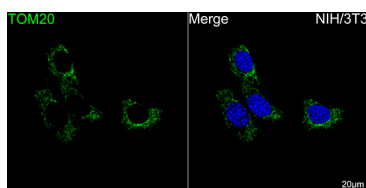
Blocking buffer: 3% nonfat dry milk in TBST.

Detection: ECL Basic Kit (RM00020).

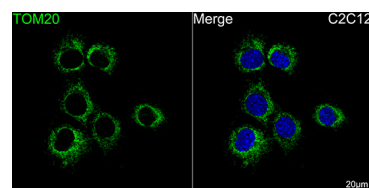
Exposure time: 30s.



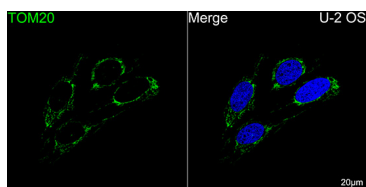
Confocal imaging of HeLa cells using TOM20 Rat mAb (A27800, dilution 1:200) followed by a further incubation with FITC-conjugated Goat anti-Rat IgG (H+L) (AS019, dilution 1:500) (Green). DAPI was used for nuclear staining (Blue). Objective: 100x.



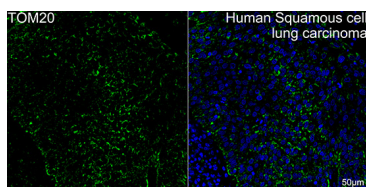
Confocal imaging of NIH/3T3 cells using TOM20 Rat mAb (A27800, dilution 1:200) followed by a further incubation with FITC-conjugated Goat anti-Rat IgG (H+L) (AS019, dilution 1:500) (Green). DAPI was used for nuclear staining (Blue). Objective: 100x.



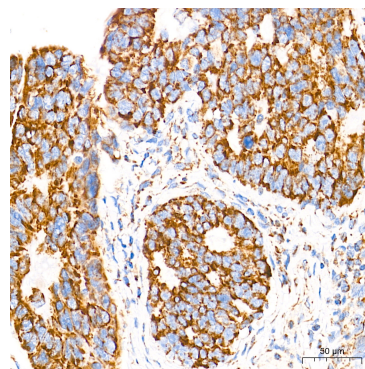
Confocal imaging of C2C12 cells using TOM20 Rat mAb (A27800, dilution 1:200) followed by a further incubation with FITC-conjugated Goat anti-Rat IgG (H+L) (AS019, dilution 1:500) (Green). DAPI was used for nuclear staining (Blue). Objective: 100x.



Confocal imaging of U-2 OS cells using TOM20 Rat mAb (A27800, dilution 1:200) followed by a further incubation with FITC-conjugated Goat anti-Rat IgG (H+L) (AS019, dilution 1:500) (Green). DAPI was used for nuclear staining (Blue). Objective: 100x.

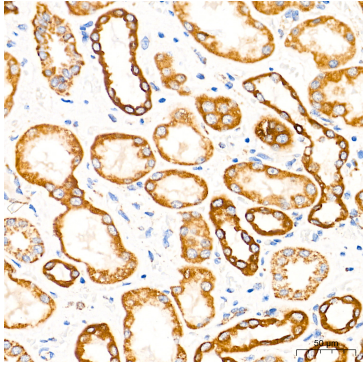


Confocal imaging of paraffin-embedded Human Squamous cell lung carcinoma tissue using TOM20 Rat mAb (A27800, dilution 1:200) followed by a further incubation with FITC-conjugated Goat anti-Rat IgG (H+L) (AS019, dilution 1:500) (Green). DAPI was used for nuclear staining (Blue). High pressure antigen retrieval performed with 0.01M Citrate Buffer (pH 6.0) prior to IF staining. Objective: 40x.

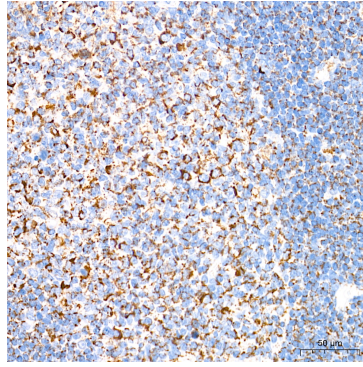


Immunohistochemistry analysis of paraffin-embedded Human colon carcinoma tissue using TOM20 Rat mAb (A27800) at a dilution of 1:1000 (40x lens). High pressure antigen retrieval performed with 0.01M Tris-EDTA Buffer (pH 9.0) prior to IHC staining.

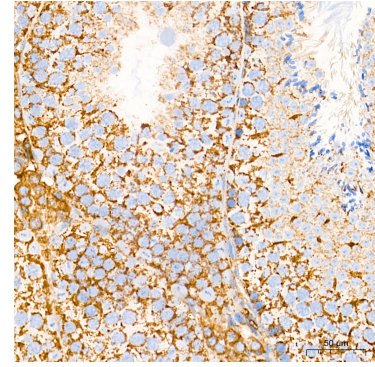
Validation Data



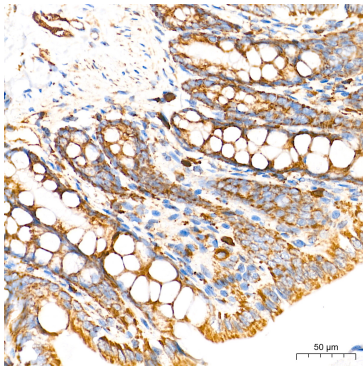
Immunohistochemistry analysis of paraffin-embedded Human kidney tissue using TOM20 Rat mAb (A27800) at a dilution of 1:1000 (40x lens). High pressure antigen retrieval performed with 0.01M Tris-EDTA Buffer (pH 9.0) prior to IHC staining.



Immunohistochemistry analysis of paraffin-embedded Human tonsil tissue using TOM20 Rat mAb (A27800) at a dilution of 1:1000 (40x lens). High pressure antigen retrieval performed with 0.01M Tris-EDTA Buffer (pH 9.0) prior to IHC staining.



Immunohistochemistry analysis of paraffin-embedded Mouse testis tissue using TOM20 Rat mAb (A27800) at a dilution of 1:1000 (40x lens). High pressure antigen retrieval performed with 0.01M Tris-EDTA Buffer (pH 9.0) prior to IHC staining.



Immunohistochemistry analysis of paraffin-embedded Rat colon tissue using TOM20 Rat mAb (A27800) at a dilution of 1:1000 (40x lens). High pressure antigen retrieval performed with 0.01M Tris-EDTA Buffer (pH 9.0) prior to IHC staining.