

ABflo® 610 Rabbit anti-Mouse CD8a mAb

Catalog No.: A27809

Basic Information

Observed MW

Calculated MW

27kDa

Category

Primary antibody

Applications

FC

Cross-Reactivity

Mouse

CloneNo number

ARC60677

Conjugate

ABflo® 610. Ex:421nm. Em:612nm.

Background

Enables identical protein binding activity. Acts upstream of or within several processes, including cytotoxic T cell differentiation; defense response to virus; and positive regulation of calcium-mediated signaling. Located in external side of plasma membrane. Is expressed in several structures, including endocrine gland; exocrine gland; genitourinary system; gut; and hemolymphoid system gland. Orthologous to human CD8A (CD8a molecule).

Recommended Dilutions

FC ≤0.2 µg per million cells
in 100 µl volume

Immunogen Information

Gene ID

12525

Swiss Prot

P01731

Immunogen

Recombinant protein (or fragment). This information is considered to be commercially sensitive.

Synonyms

Ly-2; Ly-B; Ly-35; Lyt-2

Contact

 | 400-999-6126

 | cn.market@abclonal.com.cn

 | www.abclonal.com.cn

Product Information

Source

Rabbit

Isotype

IgG

Purification

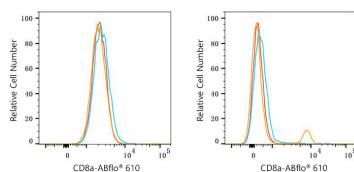
Affinity purification

Storage

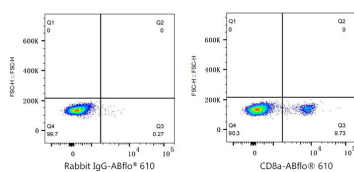
Store at 2-8°C. Avoid freeze.

Buffer: PBS with 0.09% Sodium azide, 0.2% BSA, pH7.3.

Validation Data



Flow cytometry: 1×10^6 RAW 264.7 cells (negative control, left) and C57BL/6 mouse splenocytes (right) were surface-stained with ABflo® 610 Rabbit anti-Mouse CD8a mAb (A27809, 0.2 μ g, orange line) or ABflo® 610 Rabbit IgG isotype control (A25826, 5 μ l/Test, blue line). Non-fluorescently stained cells were used as blank control (red line).



Flow cytometry: 1×10^6 C57BL/6 mouse splenocytes were surface-stained with ABflo® 610 Rabbit IgG isotype control (A25826, 5 μ l/Test, left) or ABflo® 610 Rabbit anti-Mouse CD8a mAb (A27809, 0.2 μ g, right).