

[KO Validated] Calnexin Rabbit mAb

Catalog No.: A27819

KO Validated

Recombinant

Basic Information

Observed MW

90kDa

Calculated MW

68kDa

Category

Primary antibody

Applications

WB, IF/ICC, IHC-P, ELISA

Cross-Reactivity

Human

CloneNo number

ARC75323

Background

This gene encodes a member of the calnexin family of molecular chaperones. The encoded protein is a calcium-binding, endoplasmic reticulum (ER)-associated protein that interacts transiently with newly synthesized N-linked glycoproteins, facilitating protein folding and assembly. It may also play a central role in the quality control of protein folding by retaining incorrectly folded protein subunits within the ER for degradation. Alternatively spliced transcript variants encoding different isoforms have been described.

Recommended Dilutions

WB 1:5000 - 1:30000**IF/ICC** 1:1000 - 1:10000**IHC-P** 1:5000 - 1:20000

ELISA Recommended starting concentration is 1 µg/mL. Please optimize the concentration based on your specific assay requirements.

Immunogen Information

Gene ID

821

Swiss Prot

P27824

Immunogen

Synthetic peptide. This information is considered to be commercially sensitive.

Synonyms

CNX; P90; IP90

Contact

 | 400-999-6126 | cn.market@abclonal.com.cn | www.abclonal.com.cn

Product Information

Source

Rabbit

Isotype

IgG

Purification

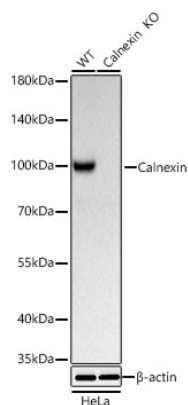
Affinity purification

Storage

Store at -20°C. Avoid freeze / thaw cycles.

Buffer: PBS with 0.09% Sodium azide, 0.05% BSA, 50% glycerol, pH7.3.

Validation Data



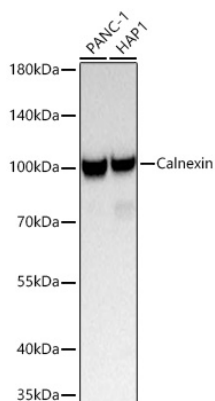
Western blot analysis of lysates from wild type (WT) and Calnexin knockout (KO) HeLa cells using [KO Validated] Calnexin Rabbit mAb (A27819) at 1:5000 dilution incubated at room temperature for 1.5 hours. Secondary antibody: HRP-conjugated Goat anti-Rabbit IgG (H+L) (AS014) at 1:10000 dilution.

Lysates/proteins: 25 µg per lane.

Blocking buffer: 3% nonfat dry milk in TBST.

Detection: ECL Basic Kit (RM00020).

Exposure time: 1s.



Western blot analysis of various lysates using [KO Validated] Calnexin Rabbit mAb (A27819) at 1:5000 dilution incubated at room temperature for 1.5 hours.

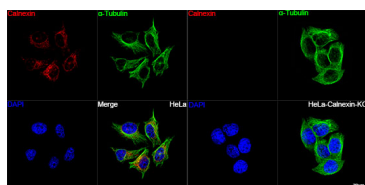
Secondary antibody: HRP-conjugated Goat anti-Rabbit IgG (H+L) (AS014) at 1:10000 dilution.

Lysates/proteins: 25 µg per lane.

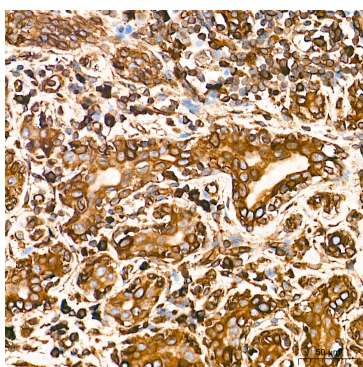
Blocking buffer: 3% nonfat dry milk in TBST.

Detection: ECL Basic Kit (RM00020).

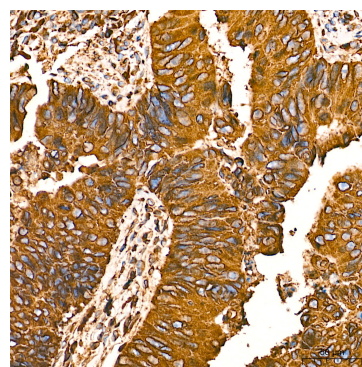
Exposure time: 1s.



Confocal imaging of HeLa cells and Calnexin knockout(KO) HeLa cells using [KO Validated] Calnexin Rabbit mAb (A27819, dilution 1:2000) followed by a further incubation with Cy3 Goat Anti-Rabbit IgG (H+L) (AS007, dilution 1:500) (Red). The cells were counterstained with α-Tubulin Mouse mAb (AC012, dilution 1:400) followed by incubation with ABflo® 488-conjugated Goat Anti-Mouse IgG (H+L) Ab (AS076, dilution 1:500) (Green). DAPI was used for nuclear staining (Blue). Objective: 100x.

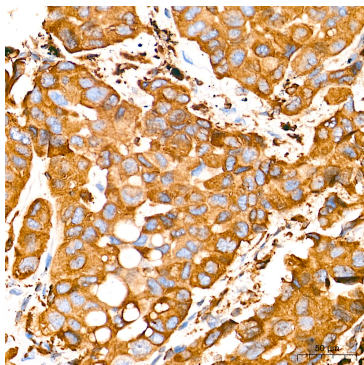


Immunohistochemistry analysis of paraffin-embedded Human breast cancer tissue using [KO Validated] Calnexin Rabbit mAb (A27819) at a dilution of 1:5000 (40x lens). High pressure antigen retrieval performed with 0.01M Tris-EDTA Buffer (pH 9.0) prior to IHC staining.



Immunohistochemistry analysis of paraffin-embedded Human colon carcinoma tissue using [KO Validated] Calnexin Rabbit mAb (A27819) at a dilution of 1:5000 (40x lens). High pressure antigen retrieval performed with 0.01M Tris-EDTA Buffer (pH 9.0) prior to IHC staining.

Validation Data



Immunohistochemistry analysis of paraffin-embedded Human lung cancer tissue using [KO Validated] Calnexin Rabbit mAb (A27819) at a dilution of 1:5000 (40x lens). High pressure antigen retrieval performed with 0.01M Tris-EDTA Buffer (pH 9.0) prior to IHC staining.