

PE/Cyanine7 Rabbit anti-Human CD8b mAb

Catalog No.: A27840

Basic Information

Observed MW

Calculated MW

24kDa

Category

Primary antibody

Applications

FC

Cross-Reactivity

Human

CloneNo number

ARC64469

Conjugate

PE-Cy7. Ex:565nm. Em:778nm.

Recommended Dilutions

FC 5 μ l per 10^6 cells in
100 μ l volume

Background

The CD8 antigen is a cell surface glycoprotein found on most cytotoxic T lymphocytes that mediates efficient cell-cell interactions within the immune system. The CD8 antigen, acting as a coreceptor, and the T-cell receptor on the T lymphocyte recognize antigens displayed by an antigen presenting cell (APC) in the context of class I MHC molecules. The functional coreceptor is either a homodimer composed of two alpha chains, or a heterodimer composed of one alpha and one beta chain. Both alpha and beta chains share significant homology to immunoglobulin variable light chains. This gene encodes the CD8 beta chain isoforms. Multiple alternatively spliced transcript variants encoding distinct membrane associated or secreted isoforms have been described. A pseudogene, also located on chromosome 2, has been identified.

Immunogen Information

Gene ID

926

Swiss Prot

P10966

Immunogen

Recombinant protein (or fragment). This information is considered to be commercially sensitive.

Synonyms

LY3; P37; LEU2; LYT3; Ly-3; CD8B1; CD8beta

Contact

☎ | 400-999-6126

✉ | cn.market@abclonal.com.cn

🌐 | www.abclonal.com.cn

Product Information

Source

Rabbit

Isotype

IgG

Purification

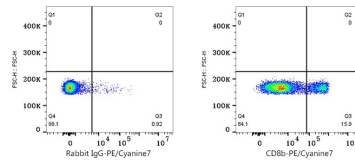
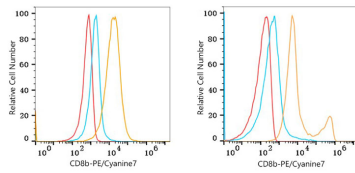
Affinity purification

Storage

Store at 2-8°C. Avoid freeze.

Buffer: PBS with 0.09% Sodium azide, 0.2% BSA, pH7.3.

Validation Data



Flow cytometry: 1×10^6 K-562 cells (negative control, left) and Human PBMC (right) were surface-stained with PE/Cyanine7 Rabbit anti-Human CD8b mAb (A27840, 5 µl/Test, orange line) or PE/Cyanine7 Rabbit IgG isotype control (5 µl/Test, blue line). Non-fluorescently stained cells were used as blank control (red line).

Flow cytometry: 1×10^6 Human PBMC were surface-stained with PE/Cyanine7 Rabbit IgG isotype control (5 µl/Test, left) or PE/Cyanine7 Rabbit anti-Human CD8b mAb (A27840, 5 µl/Test, right).