

ABflo® 500 Rabbit anti-Mouse CD4 mAb

Catalog No.: A27843

Basic Information

Observed MW

Calculated MW

51kDa

Category

Primary antibody

Applications

FC

Cross-Reactivity

Mouse

CloneNo number

ARC64069

Conjugate

ABflo® 500. Ex:410nm. Em:501nm.

Recommended Dilutions

FC ≤0.5 µg per million cells
in 100 µl volume

Background

Predicted to enable several functions, including interleukin-16 binding activity; interleukin-16 receptor activity; and protein homodimerization activity. Involved in helper T cell enhancement of adaptive immune response. Acts upstream of or within several processes, including defense response to Gram-negative bacterium; positive regulation of calcium-mediated signaling; and positive regulation of peptidyl-tyrosine phosphorylation. Located in endoplasmic reticulum; external side of plasma membrane; and membrane raft. Is expressed in several structures, including alimentary system; brain; genitourinary system; hemolymphoid system; and liver and biliary system. Used to study type 1 diabetes mellitus. Human ortholog(s) of this gene implicated in immunodeficiency 79. Orthologous to human CD4 (CD4 molecule).

Immunogen Information

Gene ID

12504

Swiss Prot

P06332

Immunogen

Recombinant protein (or fragment). This information is considered to be commercially sensitive.

Synonyms

L3T4; Ly-4

Contact

☎ | 400-999-6126

✉ | cn.market@abclonal.com.cn

🌐 | www.abclonal.com.cn

Product Information

Source

Rabbit

Isotype

IgG

Purification

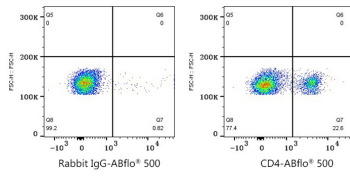
Affinity purification

Storage

Store at 2-8°C. Avoid freeze.

Buffer: PBS with 0.09% Sodium azide, 0.2% BSA, pH7.3.

Validation Data



Flow cytometry: 1×10^6 C57BL/6 mouse splenocytes were surface-stained with ABflo® 500 Rabbit IgG isotype control (A25972, 5 μ l/Test, left) or ABflo® 500 Rabbit anti-Mouse CD4 mAb (A27843, 0.5 μ g, right).