

ABflo® 450 Rabbit anti-Mouse Ki67 mAb

Catalog No.: A27866

Basic Information

Observed MW

Calculated MW
351kDa

Category
Primary antibody

Applications
FC (intra)

Cross-Reactivity
Mouse, Rat

CloneNo number
ARC69121

Conjugate
ABflo® 450. Ex:406nm. Em:445nm.

Background

Predicted to enable protein C-terminus binding activity. Involved in regulation of chromatin organization. Acts upstream of or within cholangiocyte proliferation; hepatocyte proliferation; and meiotic cell cycle. Located in chromosome; cytoplasm; and nucl

Recommended Dilutions

FC (intra) ≤0.5 µg per million cells
in 100 µl volume

Immunogen Information

Gene ID
17345

Swiss Prot
E9PVX6

Immunogen

Recombinant protein (or fragment). This information is considered to be commercially sensitive.

Synonyms

Ki67; Ki-67; D630048A14Rik

Contact

 | 400-999-6126

 | cn.market@abclonal.com.cn

 | www.abclonal.com.cn

Product Information

Source
Rabbit

Isotype
IgG

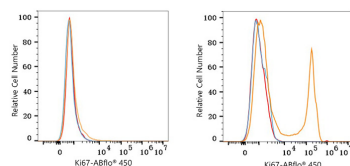
Purification
Affinity purification

Storage

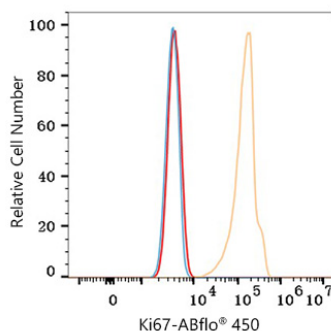
Store at 2-8°C. Avoid freeze.

Buffer: PBS with 0.09% Sodium azide, 0.2% BSA, pH7.3.

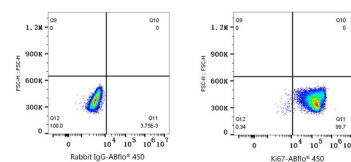
Validation Data



Flow cytometry: 1×10^6 C57BL/6 mouse splenocytes (untreated, left) and C57BL/6 mouse splenocytes (Con A-stimulated for 3 days, right) were intracellularly-stained with ABflo® 450 Rabbit anti-Mouse Ki67 mAb (A27866, 0.5 μ g, orange line) or ABflo® 450 Rabbit IgG isotype control (A27451, 5 μ l/Test, blue line). Non-fluorescently stained cells were used as blank control (red line).



Flow cytometry: 1×10^6 RAW264.7 cells were intracellularly-stained with ABflo® 450 Rabbit anti-Mouse Ki67 mAb (A27866, 0.5 μ g, orange line) or ABflo® 450 Rabbit IgG isotype control (A27451, 5 μ l/Test, blue line). Non-fluorescently stained cells were used as blank control (red line).



Flow cytometry: 1×10^6 RAW264.7 cells were intracellularly-stained with ABflo® 450 Rabbit IgG isotype control (A27451, 5 μ l/Test, left) or ABflo® 450 Rabbit anti-Mouse Ki67 mAb (A27866, 0.5 μ g, right).