

# PE Rabbit anti-Human c-Met mAb

Catalog No.: A27887

## Basic Information

### Observed MW

**Calculated MW**  
156kDa

**Category**  
Primary antibody

**Applications**  
FC (intra)

**Cross-Reactivity**  
Human

**CloneNo number**  
ARC74068

**Conjugate**  
PE. Ex:565nm. Em:574nm.

## Recommended Dilutions

**FC (intra)** 5  $\mu$ l per  $10^6$  cells in  
100  $\mu$ l volume

## Background

This gene encodes a member of the receptor tyrosine kinase family of proteins and the product of the proto-oncogene MET. The encoded preproprotein is proteolytically processed to generate alpha and beta subunits that are linked via disulfide bonds to form the mature receptor. Further processing of the beta subunit results in the formation of the M10 peptide, which has been shown to reduce lung fibrosis. Binding of its ligand, hepatocyte growth factor, induces dimerization and activation of the receptor, which plays a role in cellular survival, embryogenesis, and cellular migration and invasion. Mutations in this gene are associated with papillary renal cell carcinoma, hepatocellular carcinoma, and various head and neck cancers. Amplification and overexpression of this gene are also associated with multiple human cancers.

## Immunogen Information

Gene ID	Swiss Prot
4233	P08581

### Immunogen

Recombinant protein (or fragment). This information is considered to be commercially sensitive.

### Synonyms

DA11; HGFR; AUTS9; RCCP2; c-Met; DFNB97

## Contact

☎ | 400-999-6126

✉ | [cn.market@abclonal.com.cn](mailto:cn.market@abclonal.com.cn)

🌐 | [www.abclonal.com.cn](http://www.abclonal.com.cn)

## Product Information

Source	Isotype	Purification
Rabbit	IgG	Affinity purification

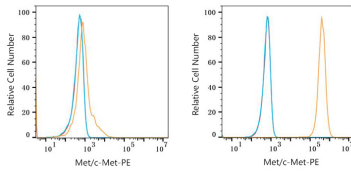
### Storage

Store at 2-8°C. Avoid freeze.

Buffer: PBS with 0.09% Sodium azide, 0.2% BSA, pH7.3.

## Validation Data

---



Flow cytometry:  $1 \times 10^6$  T-47D cells (negative control, left) and HT-29 cells (right) were intracellularly-stained with PE Rabbit anti-Human Met/c-Met mAb (A27887, 5  $\mu$ l/Test, orange line) or PE Rabbit IgG isotype control (A24172, 5  $\mu$ l/Test, blue line). Non-fluorescently stained cells were used as blank control (red line).