

ABflo® 610 Rabbit anti-Mouse CD62L/L-Selectin mAb

Catalog No.: A27888

Basic Information

Observed MW

Calculated MW

42kDa

Category

Primary antibody

Applications

FC

Cross-Reactivity

Mouse

CloneNo number

ARC69898

Conjugate

ABflo® 610. Ex:421nm. Em:612nm.

Background

Enables cell adhesion molecule binding activity. Acts upstream of or within response to ATP. Located in external side of plasma membrane. Is expressed in brain; brainstem; submandibular gland epithelium; and testis. Used to study type 1 diabetes mellitus. Human ortholog(s) of this gene implicated in Crohn's disease; IgA glomerulonephritis; and ulcerative colitis. Orthologous to human SELL (selectin L).

Recommended Dilutions

FC ≤0.25 µg per million cells
in 100 µl volume

Immunogen Information

Gene ID

20343

Swiss Prot

P18337

Immunogen

Recombinant protein (or fragment). This information is considered to be commercially sensitive.

Synonyms

Lnr; CD62L; LAM-1; Ly-22; Lyam1; LECAM1; Ly-m22; Lyam-1; LECAM-1; L-selectin

Contact

☎ | 400-999-6126

✉ | cn.market@abclonal.com.cn

🌐 | www.abclonal.com.cn

Product Information

Source

Rabbit

Isotype

IgG

Purification

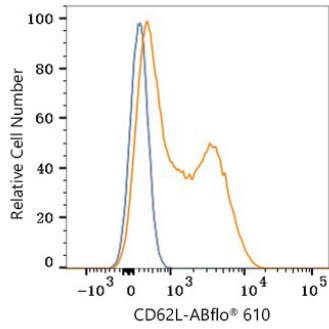
Affinity purification

Storage

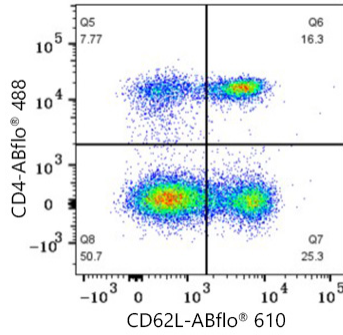
Store at 2-8°C. Avoid freeze.

Buffer: PBS with 0.09% Sodium azide, 0.2% BSA, pH7.3.

Validation Data



Flow cytometry: 1×10^6 C57BL/6 mouse splenocytes were surface-stained with ABflo® 610 Rabbit anti-Mouse CD62L mAb (A27888, 0.25 μ g, orange line) or ABflo® 610 Rabbit IgG isotype control (A25826, 5 μ l/Test, blue line). Non-fluorescently stained cells were used as blank control (red line).



Flow cytometry: 1×10^6 C57BL/6 mouse splenocytes were surface-stained with ABflo® 488 Rabbit anti-Mouse CD4 mAb (A24720, 5 μ l/Test) and ABflo® 610 Rabbit anti-Mouse CD62L mAb (A27888, 0.25 μ g, right).